

Southeast Disaster Recovery Partnership Annual Meeting 2018

Hurricane Matthew Disaster Recovery and Resilience Initiative: Linking Education, Research, and Translation through Disaster Recovery Planning and Policy

Gavin Smith, Ph.D., AICP

**Research Professor, University of North Carolina at Chapel Hill
Department of City & Regional Planning**

Director, Department of Homeland Security - Coastal Resilience Center of Excellence

Director, Hurricane Matthew Disaster Recovery and Resilience Initiative

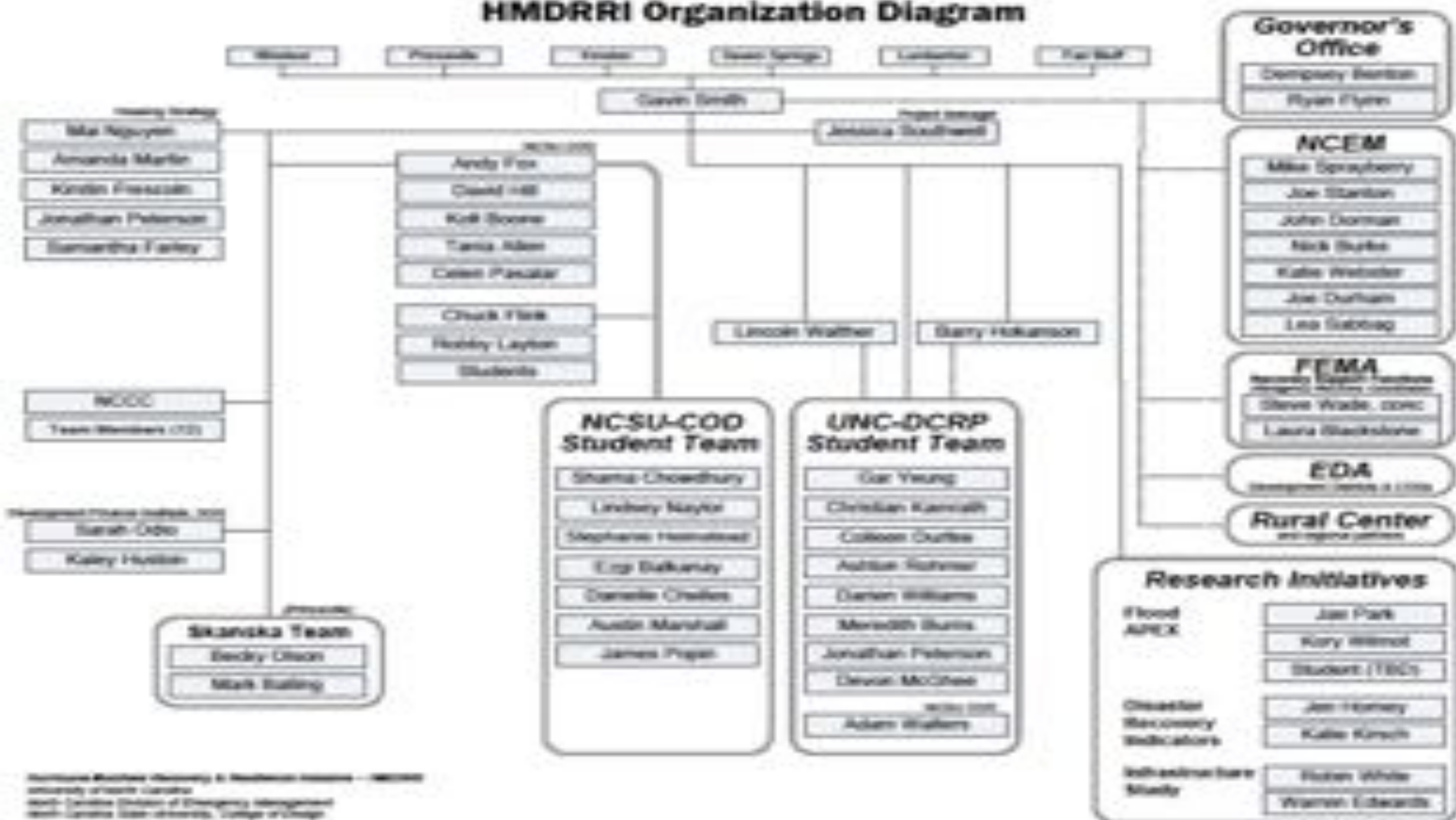


Hurricane Matthew Disaster Recovery and Resilience Initiative

- **Request from North Carolina Division of Emergency Management and Governor's Office**
 - **Objectives**
 - Engage communities to identify issues / unmet needs and ways to assist them through planning
 - Policy counsel to state and local governments, Governor's Office
 - Education
- **Community Focus**
 - 6 Communities (significant impact / modest to low capacity to recover)
 - Identified issues beyond Stafford Act
- **Funding / Support (University of North Carolina, Post-Matthew Legislative funding, NC Emergency Management, Department of Homeland Security, North Carolina Community Foundation)**



HMDRRI Organization Diagram

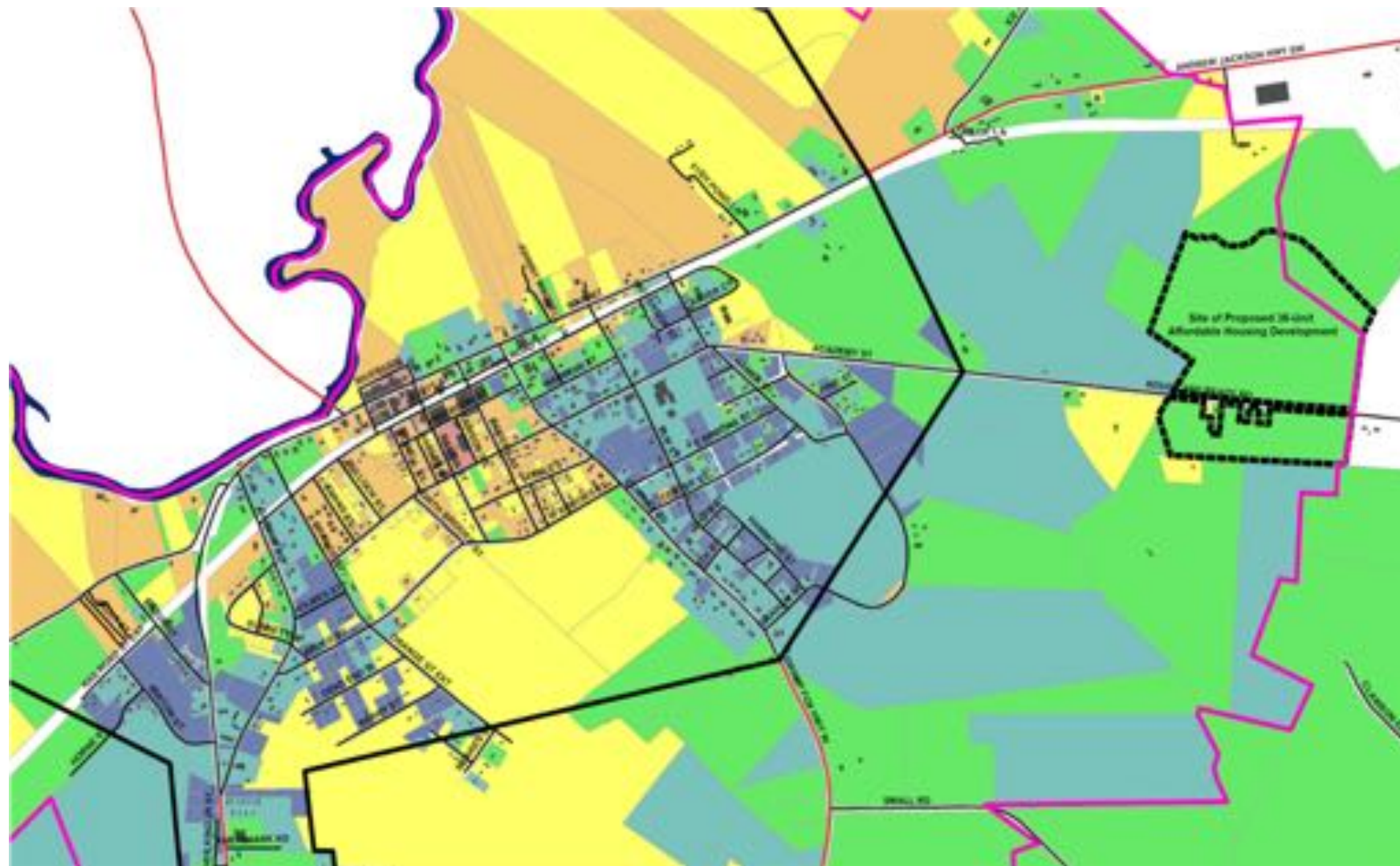


Hurricane Matthew Disaster Recovery and Resilience Initiative: Community Engagement Issues

- **Relocation Strategy Associated with Post-Disaster Housing Acquisition Program**
 - **Intake Process (interviews, focus groups, surveys, public/community meetings)**
 - **Housing needs (size, costs, etc.)**
 - **Relocation of historic homes, relocation of salvageable homes**
 - **Land Suitability Analysis**
 - **Outside floodplain, developable land**
 - **Infill lots / water and sewer availability / other infrastructure**
 - **Projected growth areas / post- Matthew replacement housing neighborhoods**
 - **Zoning map / comprehensive plan**
 - **Distance to nearest school**
 - **Housing Pattern Book (hazard resilient, affordable, energy efficient, local vernacular)**



Land Suitability Analysis



Hurricane Matthew Disaster Recovery and Resilience Initiative: Community Engagement Issues

- **Flood Retrofit of Historic Downtowns**
 - **Assessment of flood retrofit options**
 - **Feasibility (technical, fiscal, aesthetic)**
 - **Assessment of hazard risk (depth, likelihood, impact) – ASFPM Flood Retrofit Committee**



Hurricane Matthew Disaster Recovery and Resilience Initiative: Community Engagement Issues

- Greenway Design and Implementation (use of land following housing acquisition programs)
 - Linkage to existing greenways; Connectivity to relocation areas and existing communities
 - Educational forests
 - Connection to community amenities
 - Parks, schools, disaster memorials, cultural / historic structures
 - Rivers, State Parks, Other Communities





ROUTING Float time calculated at 2 mile/hr rate			DESTINATIONS	
LEG	RIVER MILES	FLOAT TIME	①	Mine restoration/conversion to waterfowl center
① → ②	6	3hrs	②	Hwy 111 put-in
② → ③	6	3hrs	③	Overnight camping & hiking
③ → ④	2.4	50mins	④	B&B + outfitter in Seven Springs
④ → ⑤	5	1hr 40mins	⑤	Oxbow river geomorphology learning station
⑤ → ⑥	8	3hrs	⑥	Overnight primitive camping + water source
⑥ → ⑦	11	3hrs 40mins	⑦	Boat storage and take-out at pedestrian bridge

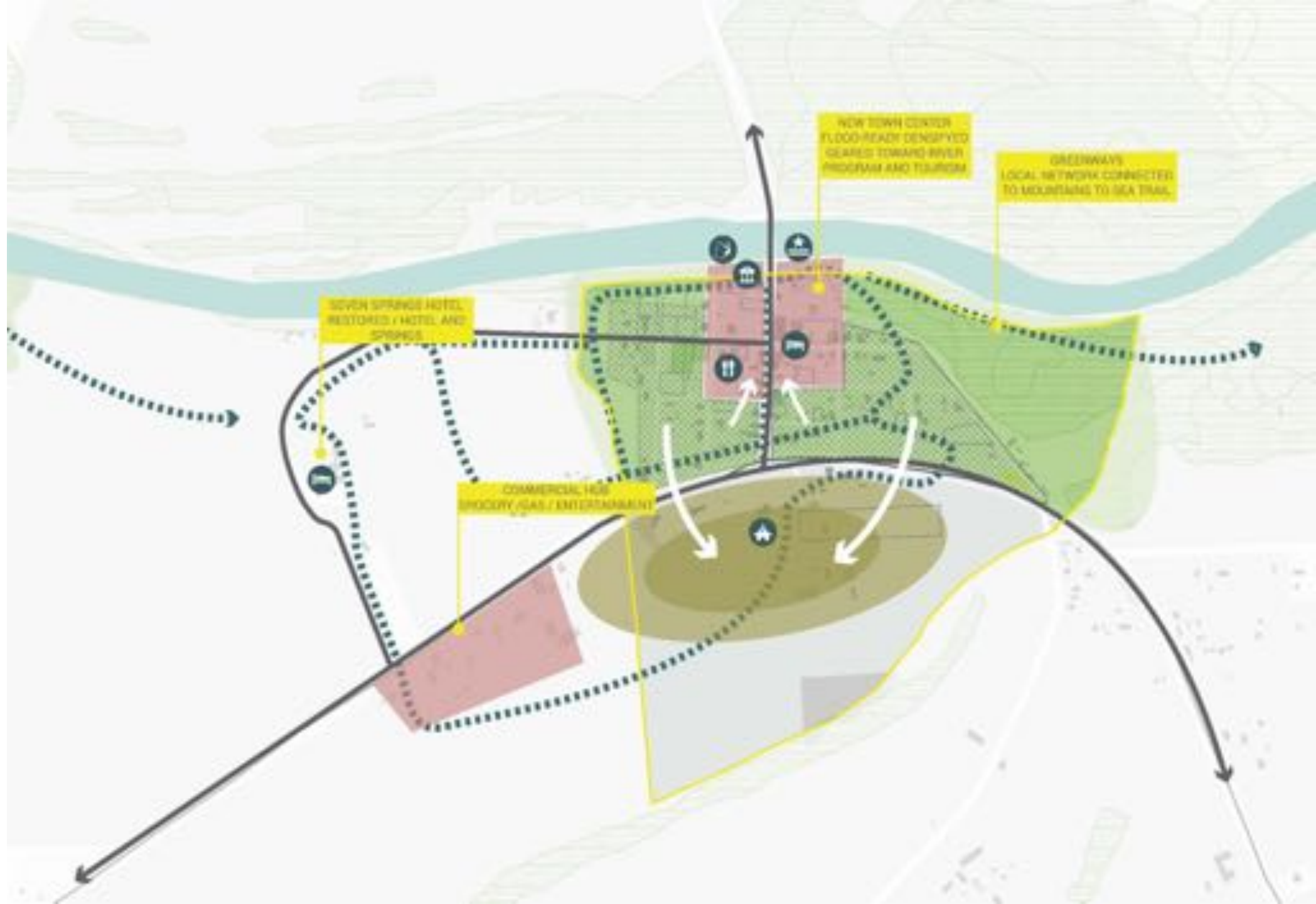


-  LUMBER RIVER BLUEWAY
-  FAIR BLUFF
-  LUMBER RIVER
-  ROADS
-  RAILROAD
-  RIVER WALK
-  GREENWAY
-  TRANSITION AREA
-  FLOODPROOF COMMERCIAL
-  RECOVERY AREA
-  ACTIVATED AREA
-  RESTAURANT
-  RIVER ACCESS
-  HOTEL
-  EVENT SPACE
-  COMMUNITY COLLEGE
-  CAMPING









- SEVEN SPRINGS
- ROADS
- GREENWAY
- NEUSE RIVER
- GREEN SPACE
- RECOVERY AREA
- COMMERCIAL
- TRANSITION AREA
- RIVER ACCESS
- FISHING
- HOTEL
- CIVIL WAR SITE
- SEVEN SPRINGS METHODIST
- RESTAURANT



Princeville Community Design Workshop

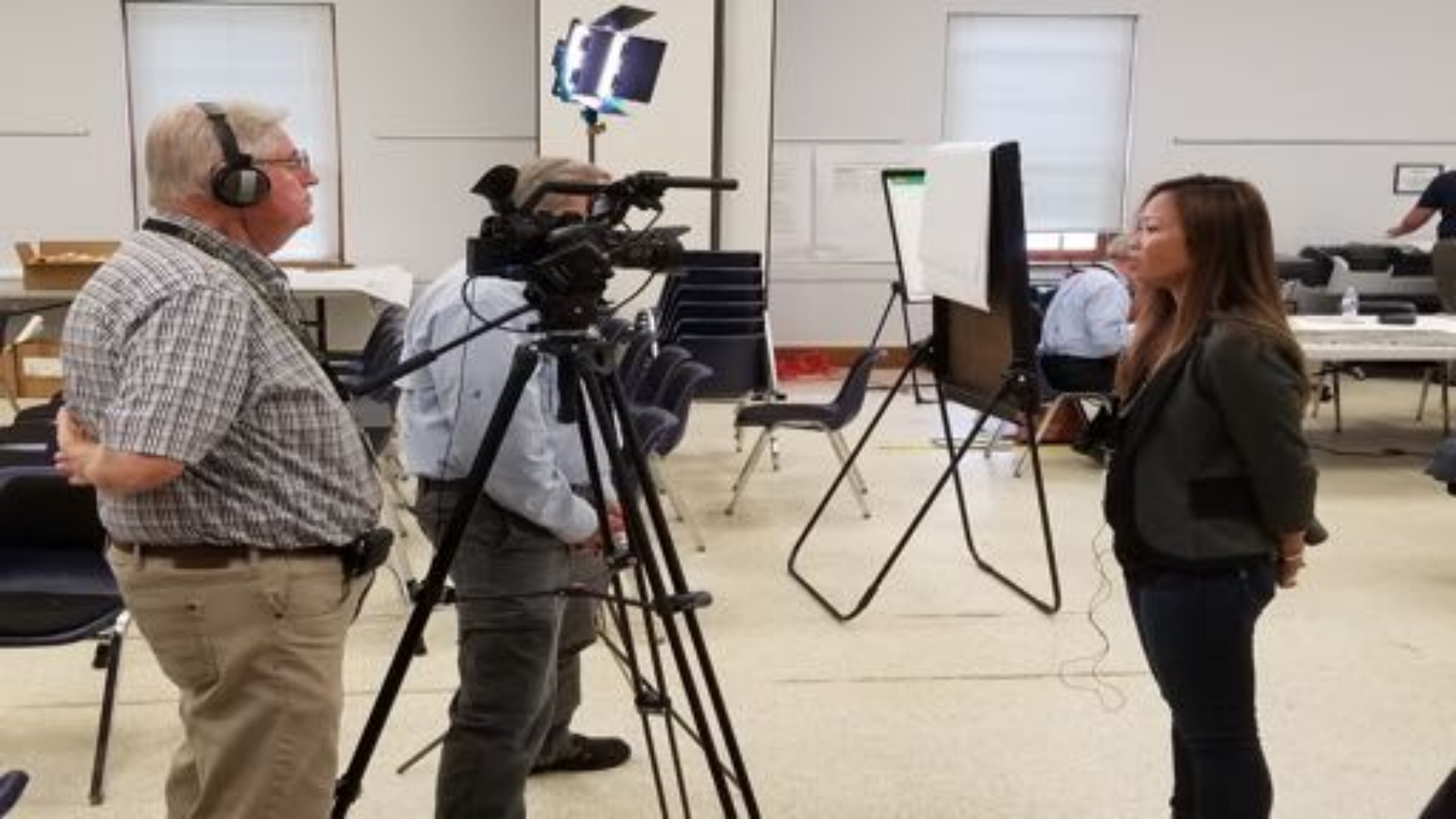
- **5-day Event**
 - **52-acre Site / Connectivity to Existing Town**
 - **3 Design Scenarios**
- **35 Architects, Land Use Planners, Landscape Architects, and Engineers**
- **North Carolina Division of Emergency Management**
 - **Logistics and Operations Support**
- **Resource Team**
 - **60 Federal, State, Non-profit Officials**
- **Engagement of Town Officials and Residents**



Princeville Design Scenarios Key Map (refer to following pages)

- ① The Town of Princeville. Connecting to the existing town is included in all scenarios.
- ② The New Site. 52 Acres, mostly out of the floodplain. This is the design focus of the workshop.
- ③ Potential future growth area. This is agricultural land. It is included in Scenario 3.
- ④ Proposed extended Dike/Levee. This is included in Scenario 2 and Scenario 3.
- ⑤ Existing Dike/Levee. Improvements proposed by NC DOT are included in all scenarios.







PROTECT.