



# Southeast Disaster Recovery Partnership

FEMA-DR-4337-FL

Alana Kuhn  
Federal Disaster  
Recovery Coordinator



June 19, 2018

# Lessons Learned from 2017 Disasters



***“Hurricane Irma’s recovery marks the first full implementation of the National Disaster Recovery Framework (NDRF) in Florida, and having the full federal family integrated into the process has proven a tremendous success”***

- This framework was critical in transitioning through the response, recovery and mitigation phases of Hurricane Irma
- This level of integration enabled place-based teams to expedite resource delivery to the most impacted areas
- Four guiding principles were embodied when engaging with impacted communities:
  - Disasters are local; locals maintain the best knowledge regarding their communities’ needs
  - Focus on tangible projects that buy-down natural hazard risk
  - Promote return on investment in all actions
  - Always be mindful of a project's life cycle

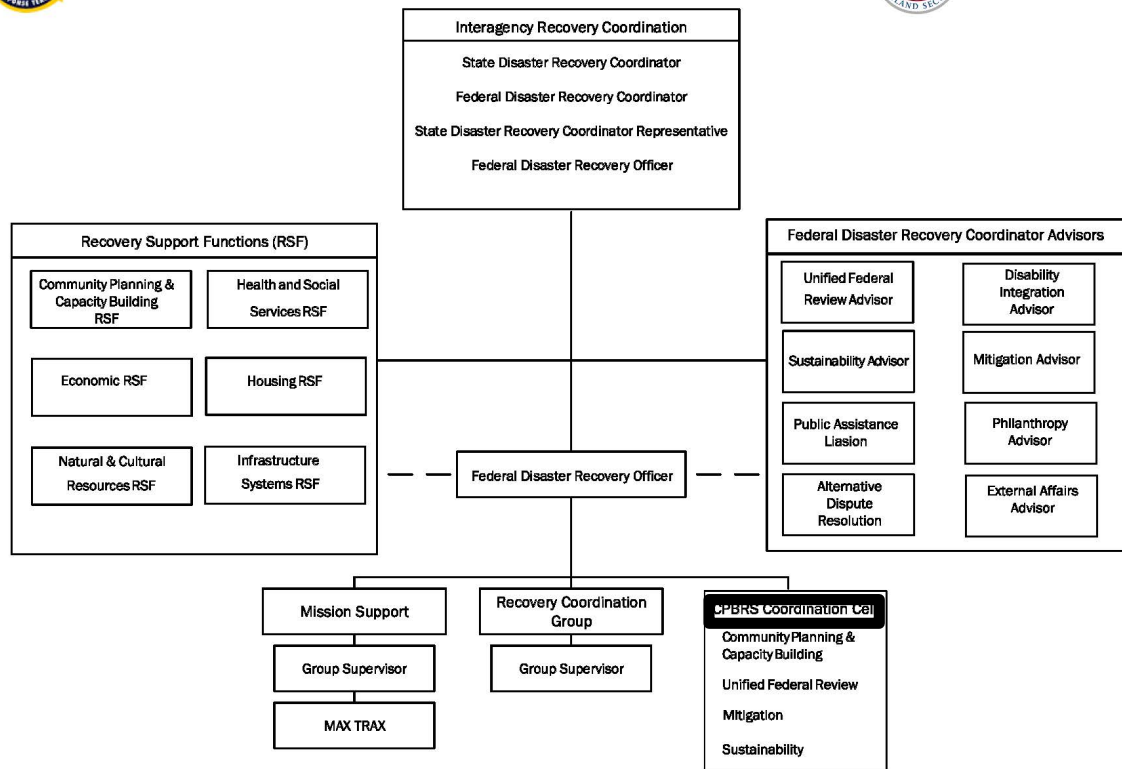
COORDINATING AGENCIES



FEMA



# Interagency Recovery Coordination (IRC)



## Interagency Recovery Coordination

- Strong leadership and direction for the IRC mission
  - ❑ Florida DEM and DEO
  - ❑ RSFs and FDRC Advisors
  - ❑ Coordinated Place Based Recovery Support Teams
  - ❑ CPBRS Coordination Cell
- Empowering decision makers at the local level
  - ❑ County administrators identified a combined total of 67 priority recovery projects
- Establishing a place-based model (CPBRS)
  - ❑ Helping communities with project development strategies (technical assistance)
  - ❑ Connecting the federal agencies directly to county officials

COORDINATING AGENCIES



FEMA



# Recovery Support Functions (RSFs)

RSF	Federal Agencies	State Agencies
Economic	Department of Commerce - Economic Development Administration	Department of Economic Opportunity
Health and Social Services	Department of Health and Human Services	Department of Health
Housing	Department of Housing and Urban Development	Department of Economic Opportunity
Infrastructure Systems	Department of Defense, Army Corps of Engineers, Department of Homeland Security-National Protection and Programs Directorate	Department of Transportation Department of Environmental Protection
Natural and Cultural Resources	Department of the Interior - Environmental Protection Agency	Department of Environmental Protection Department of State
Community Planning and Capacity Building	Department of Homeland Security – Federal Emergency Management Agency	Department of Economic Opportunity

COORDINATING AGENCIES



FEMA





# Economic Recovery Support Function



## Strategic Actions

Funded five Local Disaster Recovery Manager (LDRM) positions

Support for small business

- More than \$144 million in loans to small businesses in FL

Support for agriculture and aquaculture

- Technical advice on mitigation practices

Support for tourism

- Partnership involving Enterprise Florida and VISIT FLORIDA

Six Economic Recovery Workshops

- Designed to foster greater agriculture, business, and community resiliency
- Connecting community leaders with information concerning state and federal resources

COORDINATING AGENCIES



FEMA



# Health and Social Services Support Function



## Strategic Actions

Support local-level recovery planning

- Community health and social service needs

Identifying resources

- Connecting local organizations with resources

Training assistance

- Awareness and mitigation of environmental health hazards

Support for debris collection

- Guidance on debris management

COORDINATING AGENCIES



FEMA





# Housing Recovery Support Function



## Strategic Actions

Increase affordable and accessible housing options

- Technical, regulatory, and program assistance

Workforce/Tourism sector/ Farm labor populations

- Strategies to meet affordable housing needs

Emerging Populations

- Section 3 program

Acquisition & Replacement strategies

- Acquisition/demolition projects

COORDINATING AGENCIES



FEMA



# Infrastructure Systems Recovery Support Function



## Strategic Actions

Enhance resiliency of Water/Wastewater Treatment Systems

- Backup power source for drinking water/ wastewater facilities

Enhance power transmission/distribution systems resilience

- Develop public-private partnership
- Develop and put in place a black start procedure
- Use new technologies to locate specific power outages in real time

Develop strategies to maintain roadways & bridges

- Develop statewide roadway management plan

Develop coastal resilience & renourishment strategies

- Restore to pre-storm targeted dune heights and beach widths

COORDINATING AGENCIES



FEMA





# Infrastructure Systems Recovery Support Function (continued)

## Strategic Actions

### Enhance Communications Infrastructure

- Credentialing repair crew members
- Back-up communications network such as short-wave hand radios
- Upgrade communications network from copper to fiber optic cable

### Enhance Port resilience

- Prepositioned submersible pumps during water service interruptions
- Construction of additional sediment traps would help reduce shoaling in navigation channels



COORDINATING AGENCIES



FEMA





# Natural and Cultural Resources Recovery Support Function



## Strategic Actions

Technical assistance for cultural institutions and historic properties

- Consortium of 42 agencies from the **Heritage Emergency National Task Force (HENTF)** calling upon 600 (+) cultural institutions

Ecological health

- Improve coastal resilience through restoration of protective dunes and beaches protecting natural resources

State Managed Coastal Lands

- Partnered with and provided technical assistance to Florida Department of Environmental Protection addressing submerged lands, wildlife and water management areas

COORDINATING AGENCIES



FEMA





# Community Planning and Capacity Building Recovery Support Function



## Strategic Actions

Collaborated with the State's Division of Emergency Management (DEM), Department of Economic Opportunity (DEO)

- Local, state and federal partners together addressed potential & existing capacity gaps
- Identified issues, strategies and action steps with local communities
- Focused on community-driven solutions
- Assisted counties to develop an expedited post-disaster decision making process
- Identified funding sources for local communities
- CPCB RSF facilitated meetings with subject matter experts

COORDINATING AGENCIES



FEMA



# Task Forces

## Everglades City Resiliency Task Force

The mission was to assess and recommend resources or programs to support the development of a comprehensive strategy to support the city's resiliency and recovery efforts



## Nursing Home and Assisted Living

### Emergency Power and Mitigation Task Force

The mission was to assess and recommend resources or programs to support nursing homes and assisted living facilities to comply with Emergency Rule #58AER17-1, as well as other mitigation activities



## Coastal Resiliency Task Force

The mission was to assess damage to the coastal environment and infrastructure, and to recommend strategies to protect and conserve the environment



## Water Management for the Everglades Task Force

The mission was to support the resiliency and recovery efforts of the Las Palmas community



COORDINATING AGENCIES



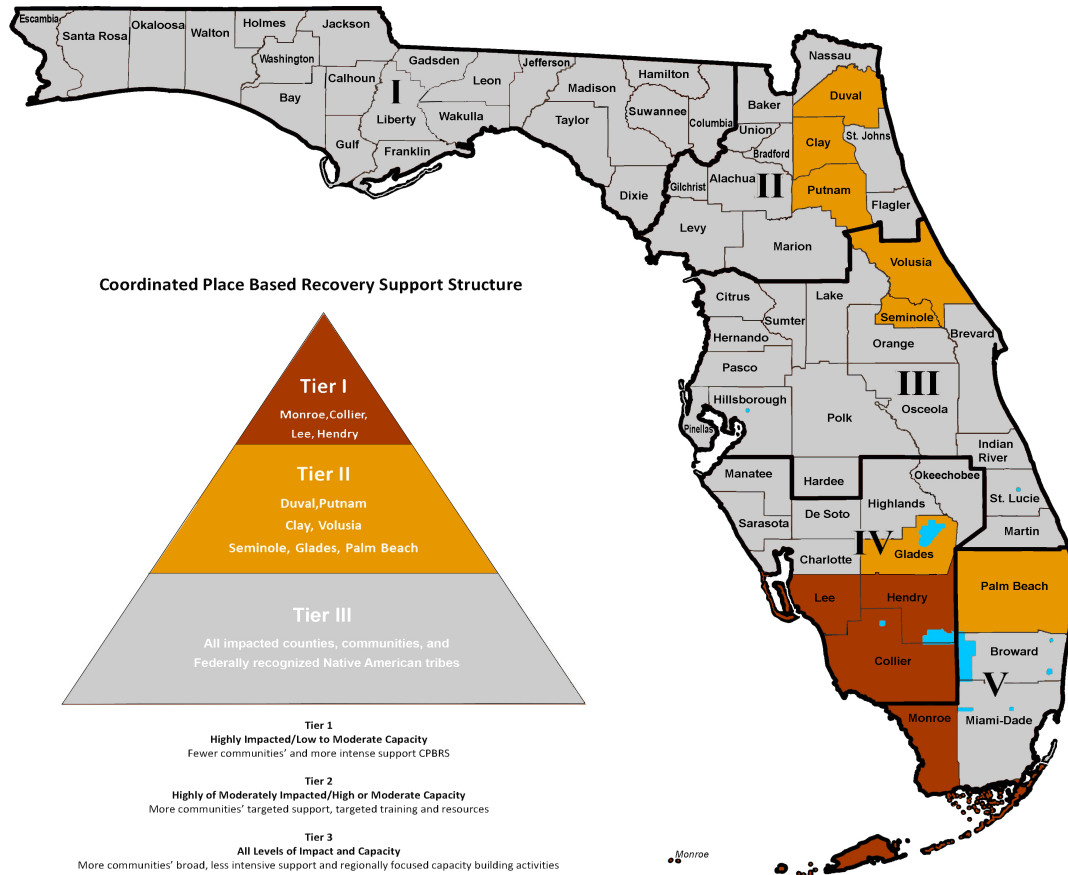
FEMA





# Coordinated Place Based Recovery Support Teams

## Coordinated Place Based Recovery Support Structure FEMA-4337-DR-FL



## Community Place Based Recovery Support Mission:

Assist local leadership to develop post-disaster recovery plans and projects

Create and implement an expedited and organized decision-making process

Develop adequate capacity to successfully identify recovery projects

Assist localities to identify critical steps and resources for project and strategy implementation

### COORDINATING AGENCIES

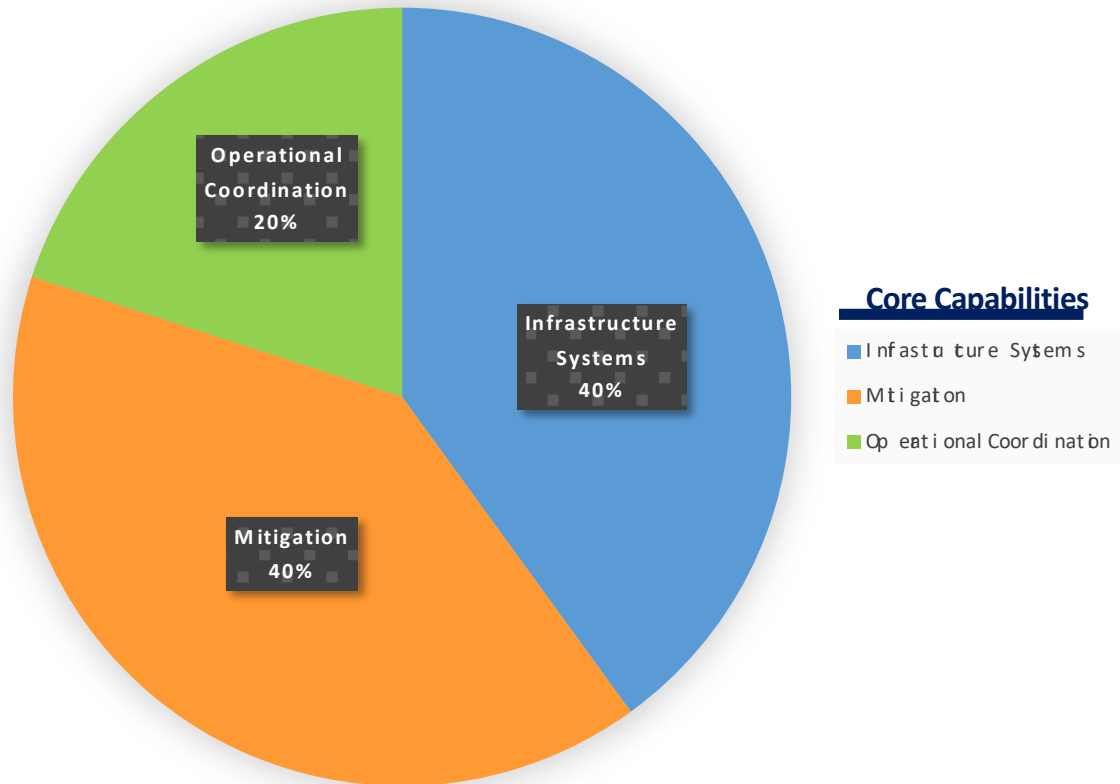


FEMA



# CPBRS – Collier Team

## Collier County



## Project List

- Hardening & Enclosure of East Bay at county EOC
- Hardening of proposed Collier County sports complex
- Everglades City Waste Water Treatment Plant
- North County Waste Water Treatment Plant
- Review guidance of Collier County HMGP projects

## COORDINATING AGENCIES



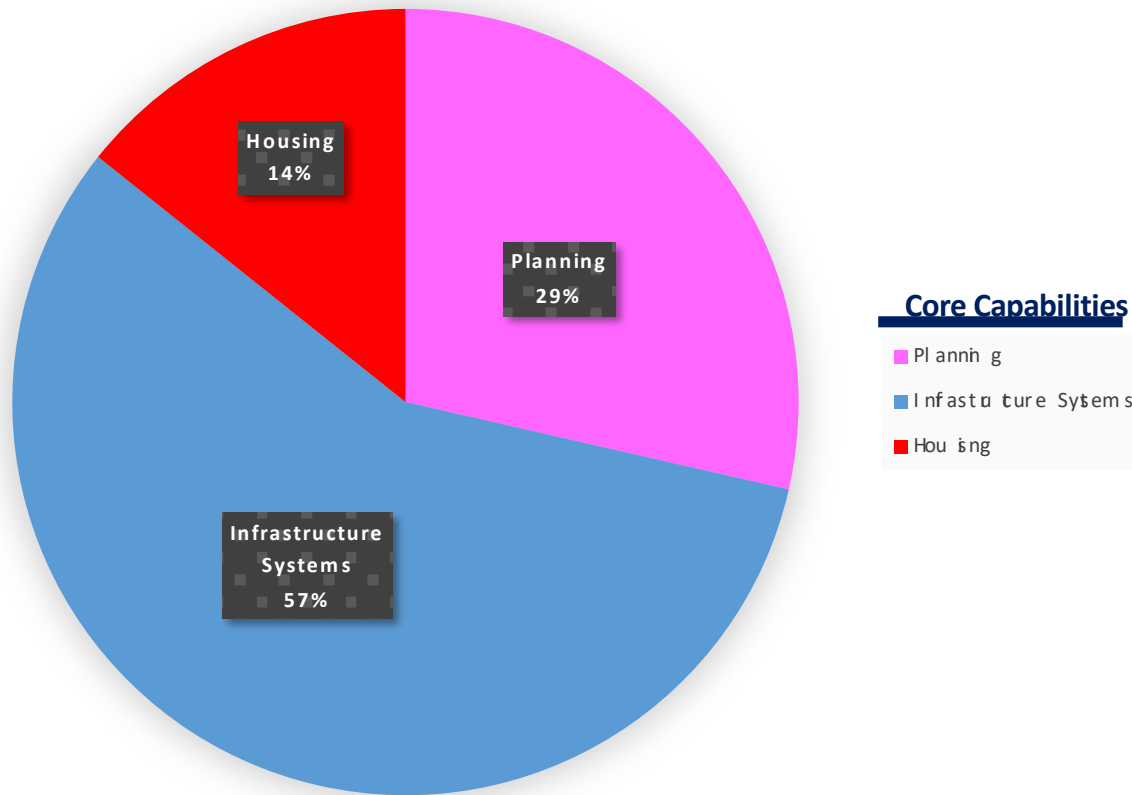
FEMA





# CPBRS – Hendry Team

## Hendry County



## Project List

- Improve stormwater management planning and implementation
- Grants Management
- Integrate substantial damage compliance and unmet needs into a comprehensive community-driven risk reduction strategy
- Workforce Development
- Improve Community Rating System score
- Protect infrastructure: road, water and sewer improvements
- Protect county-owned facilities

## COORDINATING AGENCIES

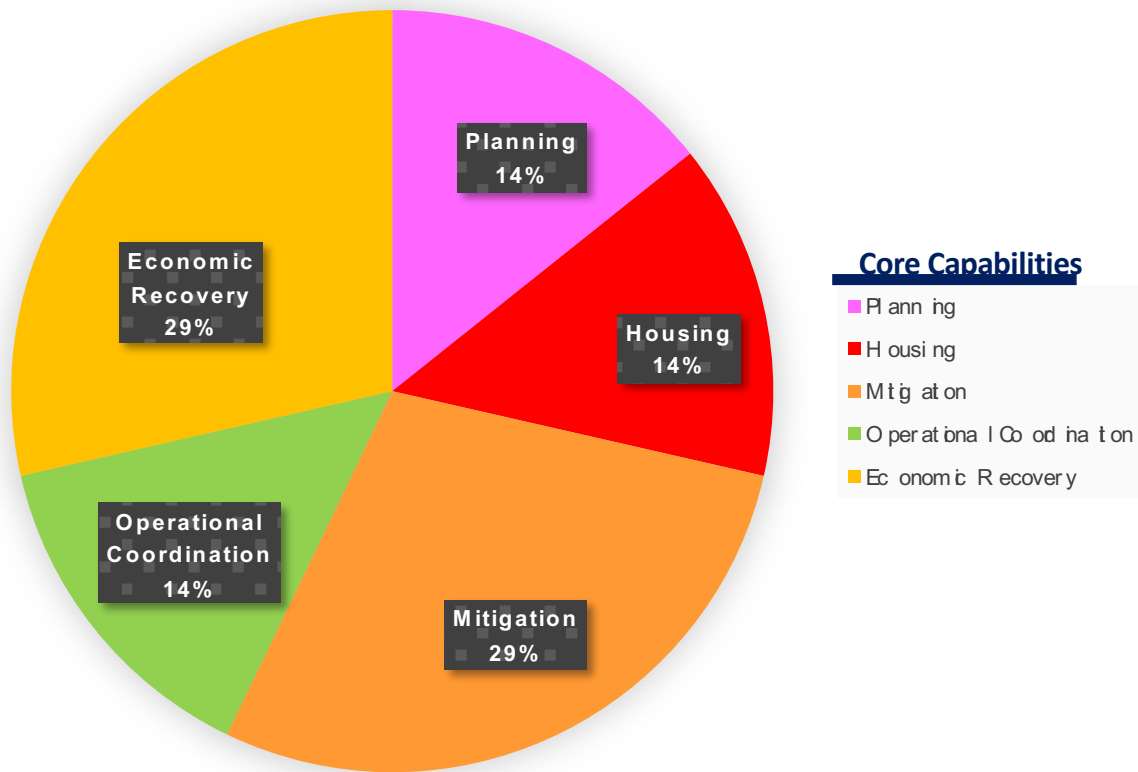


FEMA



# CPBRS – Lee Team

## Lee County



## Project List

- Housing solutions (ie; unmet needs) for short-term and long-term housing
- Emergency Operations Center (EOC) enhancements
- Flood mitigation (priority 1 for county)
- Hazard mitigation (government communications upgrades - priority 2) (shelter hardening - priority 3) (transportation infrastructure hardening - priority 4)
- Economic development and visitors and convention bureau (both county departments)
- Recovery Action Plan
- Training & capacity building
- Economic Development Department communication with business community

COORDINATING AGENCIES

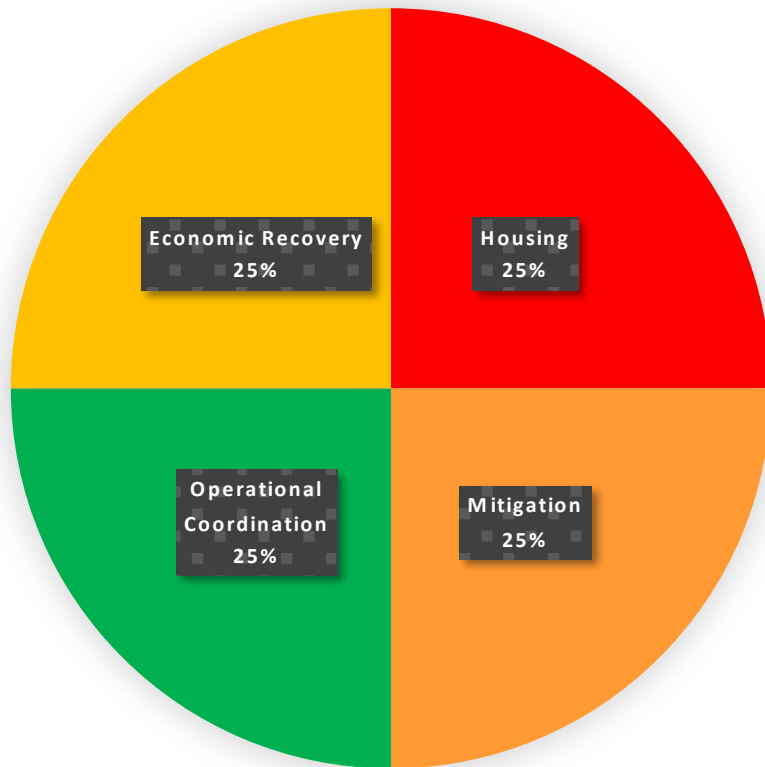


FEMA



# CPBRS – Monroe Team

## Monroe County



### Core Capabilities

- Housing
- Mitigation
- Operational Coordination
- Economic Recovery

### Project List

- Training & Capacity Building
- HMGP Application Guidance & Template Development
- Economic Recovery & Resiliency for Business Owners
- Shelters
- Workforce Housing

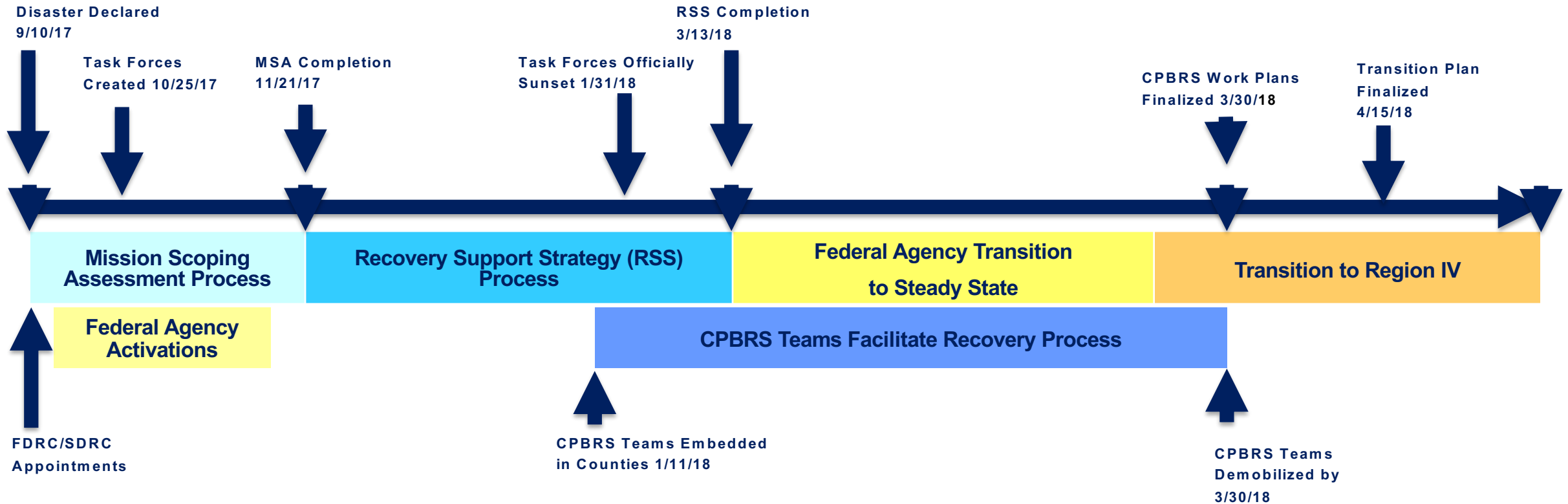
#### COORDINATING AGENCIES



FEMA



# Interagency Recovery Coordination Timeline



COORDINATING AGENCIES



FEMA



# Conclusion

---

## QUESTIONS?

### Contact Information:

Alana Kuhn

Federal Disaster Recovery Coordinator

[alana.kuhn@fema.dhs.gov](mailto:alana.kuhn@fema.dhs.gov)

202.718.3363

**“FEMA’s mission is helping people before, during and after disasters.”**

COORDINATING AGENCIES



**FEMA**

