

OCEAN OBSERVATIONS INDUSTRY PANEL

SECOORA Stakeholder Meeting

Bob Musser

Director, Port Environmental

MaY 18, 2017



The Gateway to Central Florida





Harbor dedicated in 1953





History

- Man made port, dedicated in 1953
- Special taxing district created by the State
 - CPA stopped collecting taxes in 1986
 - We operate off revenue generated and through federal funding and state grants
- Began as a small shrimp and oil port, now well diversified in general cargo, cruise and petroleum
- “Landlord Port”
 - Approximately 3,300 acres, 1,100 of which are upland with more than 200 tenants/sub-tenants
- 5 elected Commissioners who set policy

Circa 1950's



Today





Cruise



Cargo



Port Canaveral
Four Core
Business Lines



Recreation and
Entertainment



Real Estate

2015 ECONOMIC IMPACT STUDY

- \$2 billion net economic impact to the region
- \$962 million in direct and indirect wages and salaries
- \$345 million in local spending
- \$89 million in state and local taxes
- More than 20,000 jobs related to the Port (3,300 more than the 2012 study)
 - 9,568 Direct jobs
 - 5,532 Indirect jobs
 - 5,190 Induced jobs

Cruise



- ❖ 4.2 million total passengers in 2016.
- ❖ 4.5 million total passengers are projected in 2017.
- ❖ New homeported ships in 2016:
 - ❖ ***Carnival Magic***
 - ❖ ***Carnival Victory***
 - ❖ ***Carnival Valor***
 - ❖ ***Majesty of the Seas***
 - ❖ ***Oasis of the Seas***
 - ❖ ***Norwegian Epic***

Cargo

- ❖ Cargo tonnage reached 5.5 million in 2016, up 32.5 percent.
- ❖ Weekly container service from Central America to Europe (GT USA/Streamlines/Tropical).
- ❖ New import autos averaging more than 1,000 units per month (Autoport).



CPA Inlet Management Plan

Jetty Park Beach 1992



- Sand By-pass by Corps of Engineers
- Physical surveys
- Tilling of Escarpments prior to nesting season
- Sea Turtle Monitoring
- Sand Budget Reporting
- Dune Management
- South Jetty Sediment Trap

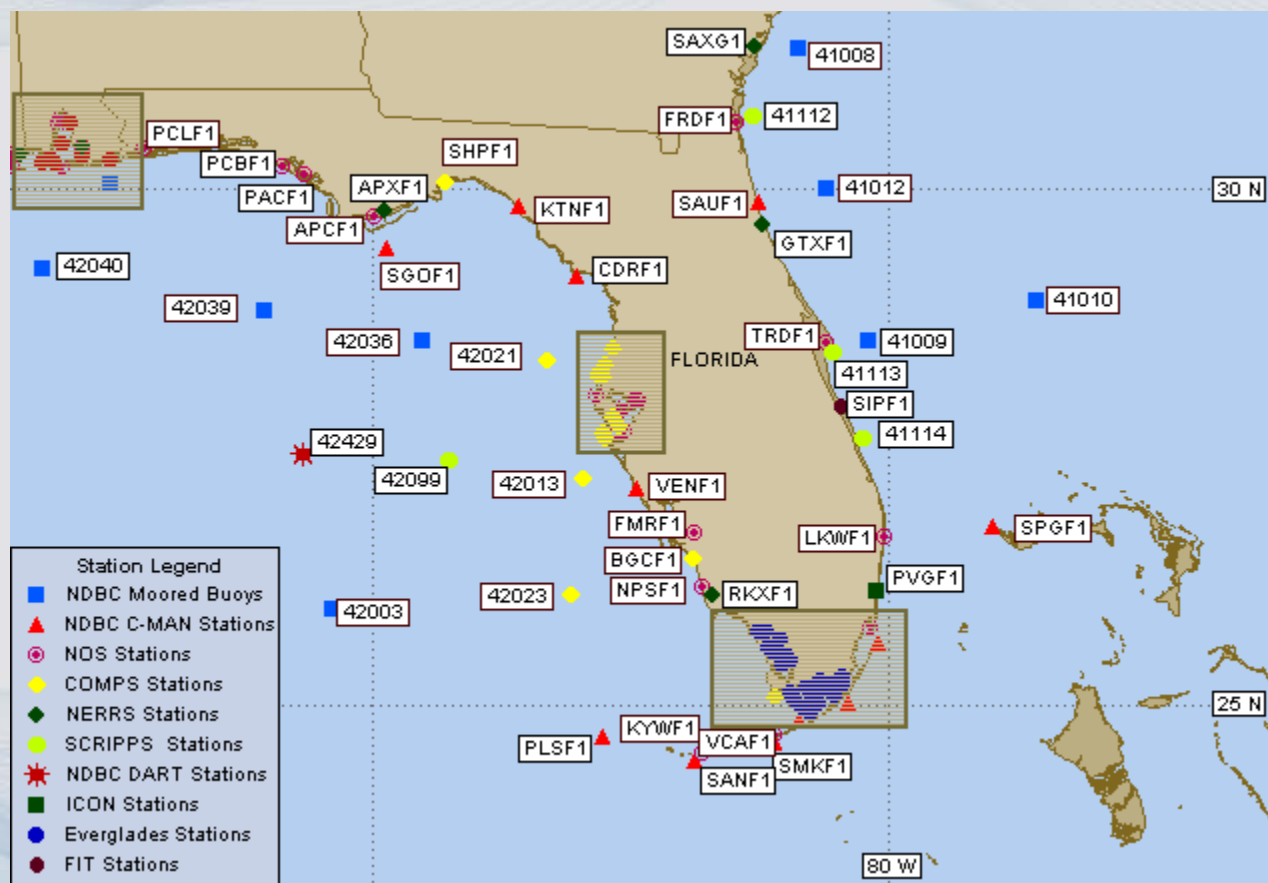


Jetty Park Beach 2002



CANAVERAL HARBOR SAND BYPASS PROJECT

Ocean Observation Stations



Who from the Port uses the data?

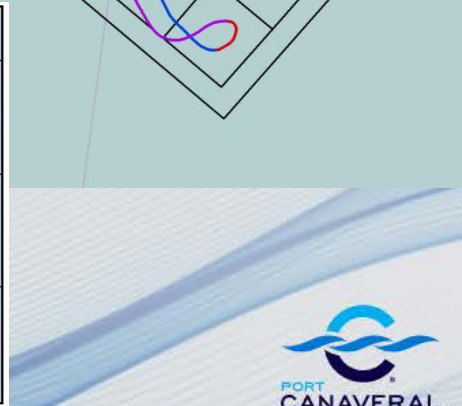
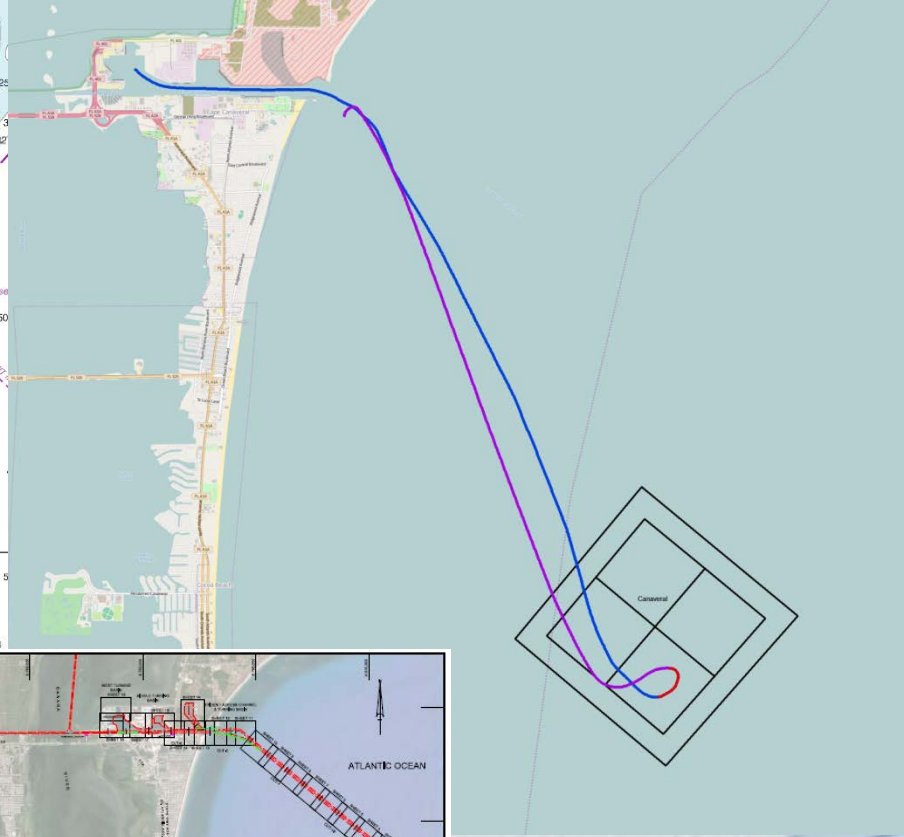


US Army Corps
of Engineers®
Jacksonville District



- Corps of Engineers
 - Dredging – new work & maintenance
- Coast Guard
 - Aids to Navigation,
 - Marine Safety & Disaster Recovery
- Port Canaveral
 - HarborMaster Department
 - Canaveral Pilots
 - Dredging contractors
 - Cargo & Cruise vessels
 - Navy
 - USAF-CCAFS/Patrick (Eastern Range)
 - NASA – KSC
- Others
 - Commercial Space Companies
 - Recreational & Commercial fishing vessels
 - Surfers





Current Data – Future Needs?

- Existing Buoy Data
 - Wind speed, direction, & gusts
 - Air & sea temperatures
 - Dew point temperature
 - Atmospheric pressure
 - Wind gusts
 - Heat index
 - Wave & swell height, period, direction, averages, etc.
- Additional Data? (based on other available data on SE buoys)
 - Atmospheric pressure trend
 - Buoy camera**
 - Salinity
 - Visibility

QUESTIONS??



Bob Musser, Jr.

Director, Port Environmental

RMusser@portcanaveral.com; 321.783.7831, ext. 256

