

# S-WITCH

Savannah - Water Integrated Tool for ocean,  
Coastal and river Hydraulics forecasting

I. Federico

F. Montagna

S. Causio

G. Coppini

K. Park

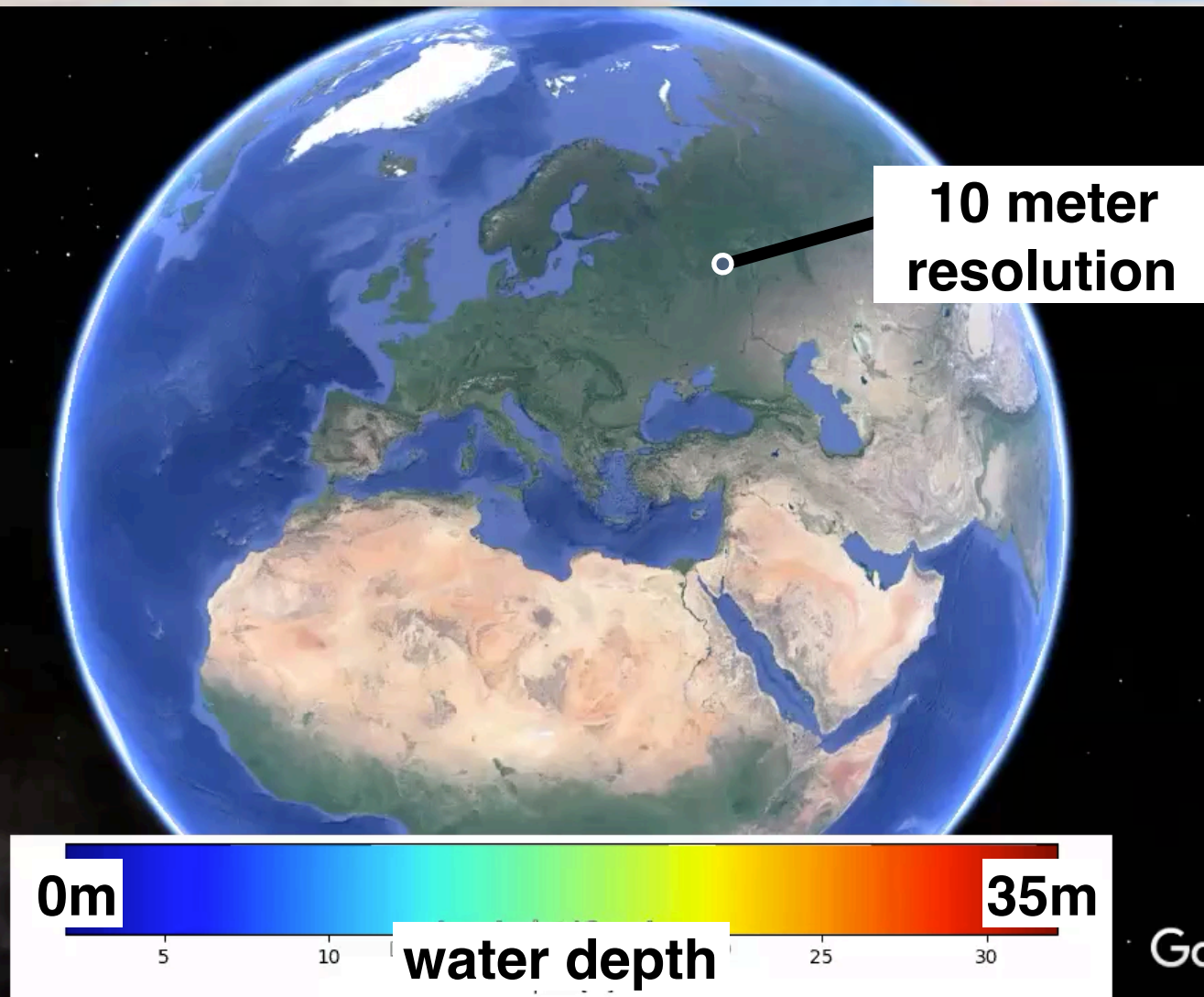
E. Di Lorenzo

N. Pinardi

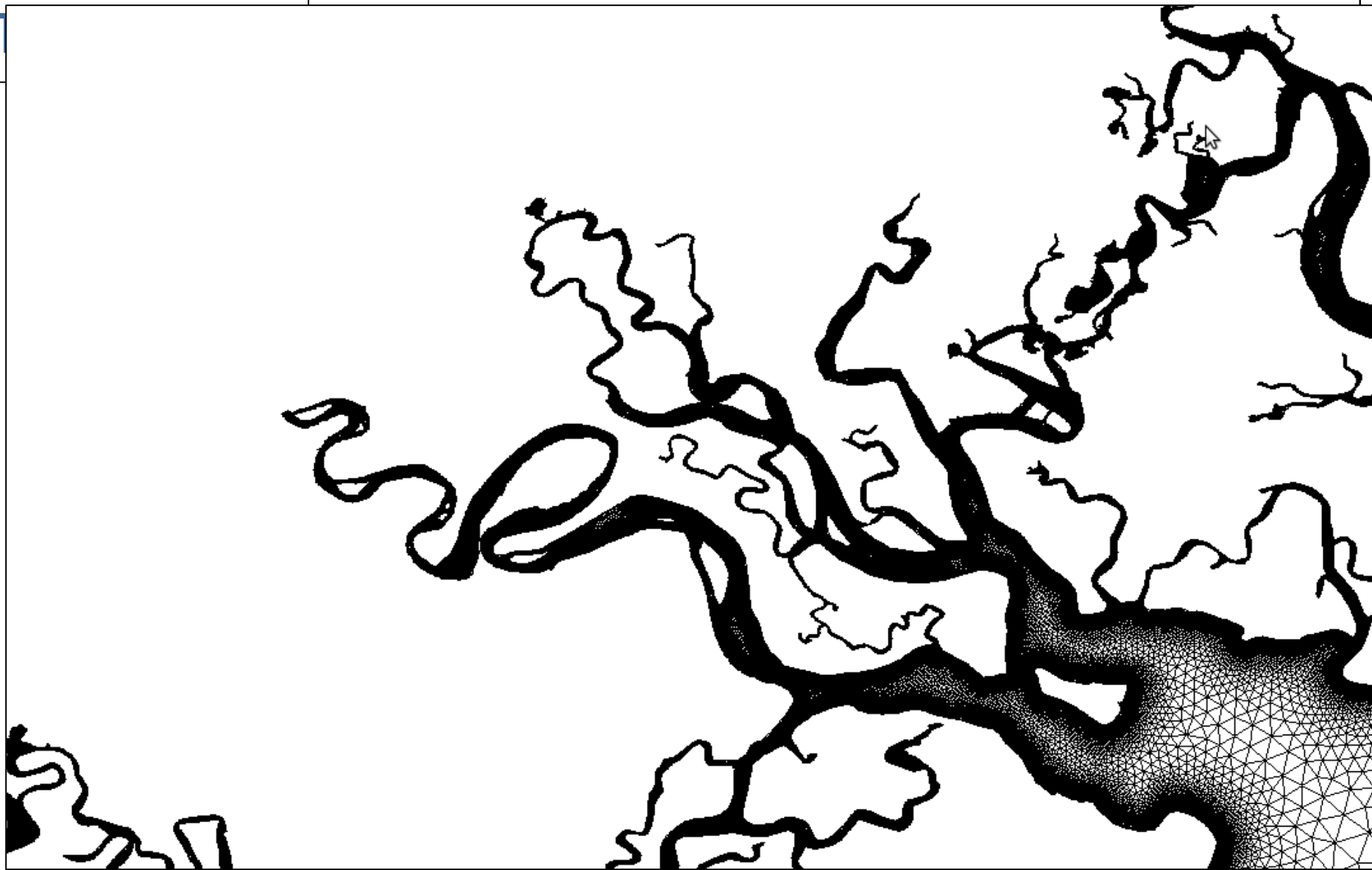


ALMA MATER STUDIORUM  
UNIVERSITÀ DI BOLOGNA

**GOAL:** To model and forecast water level changes at the scale where people live

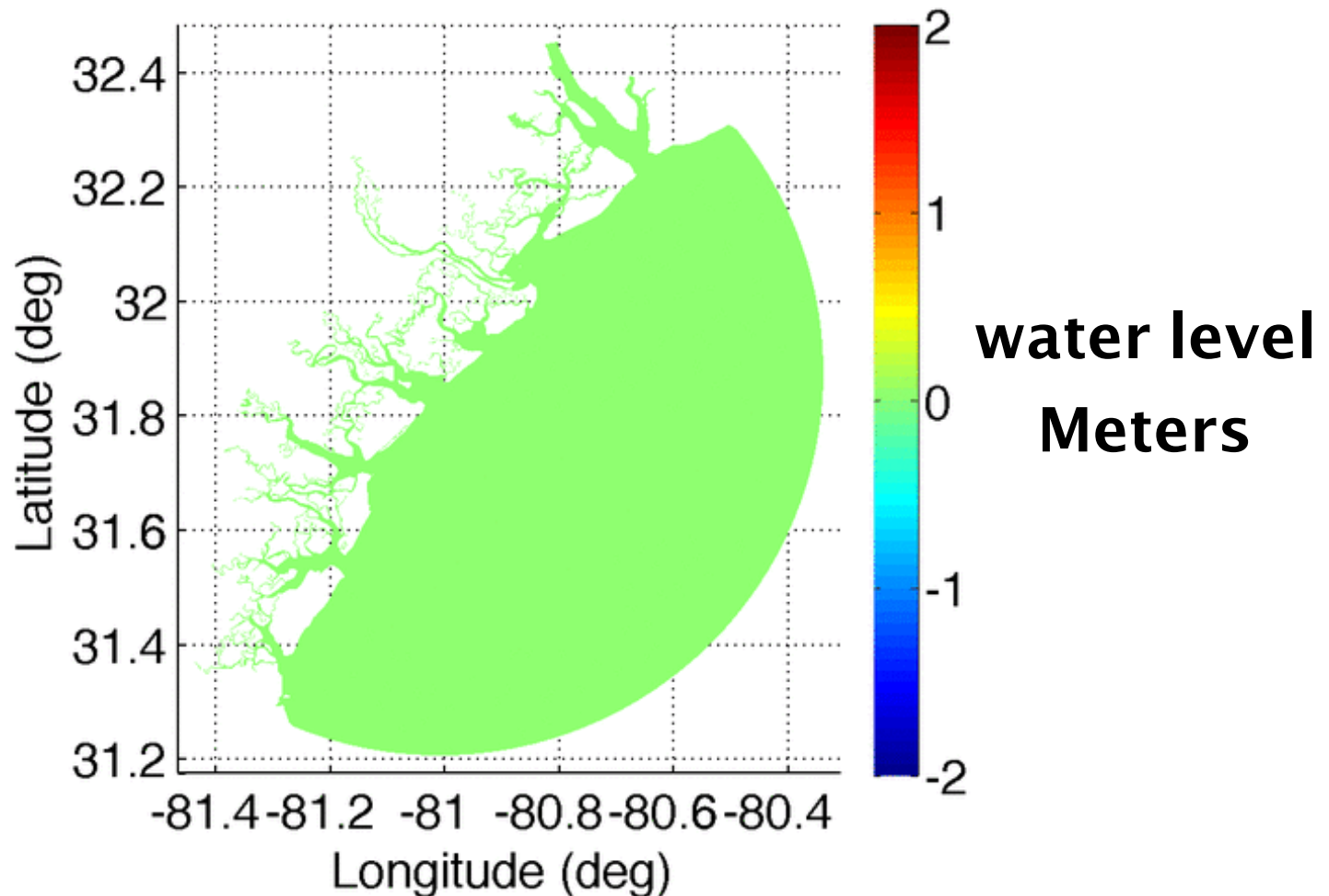


A 10m resolution co



# The Daily Forecast Cycle

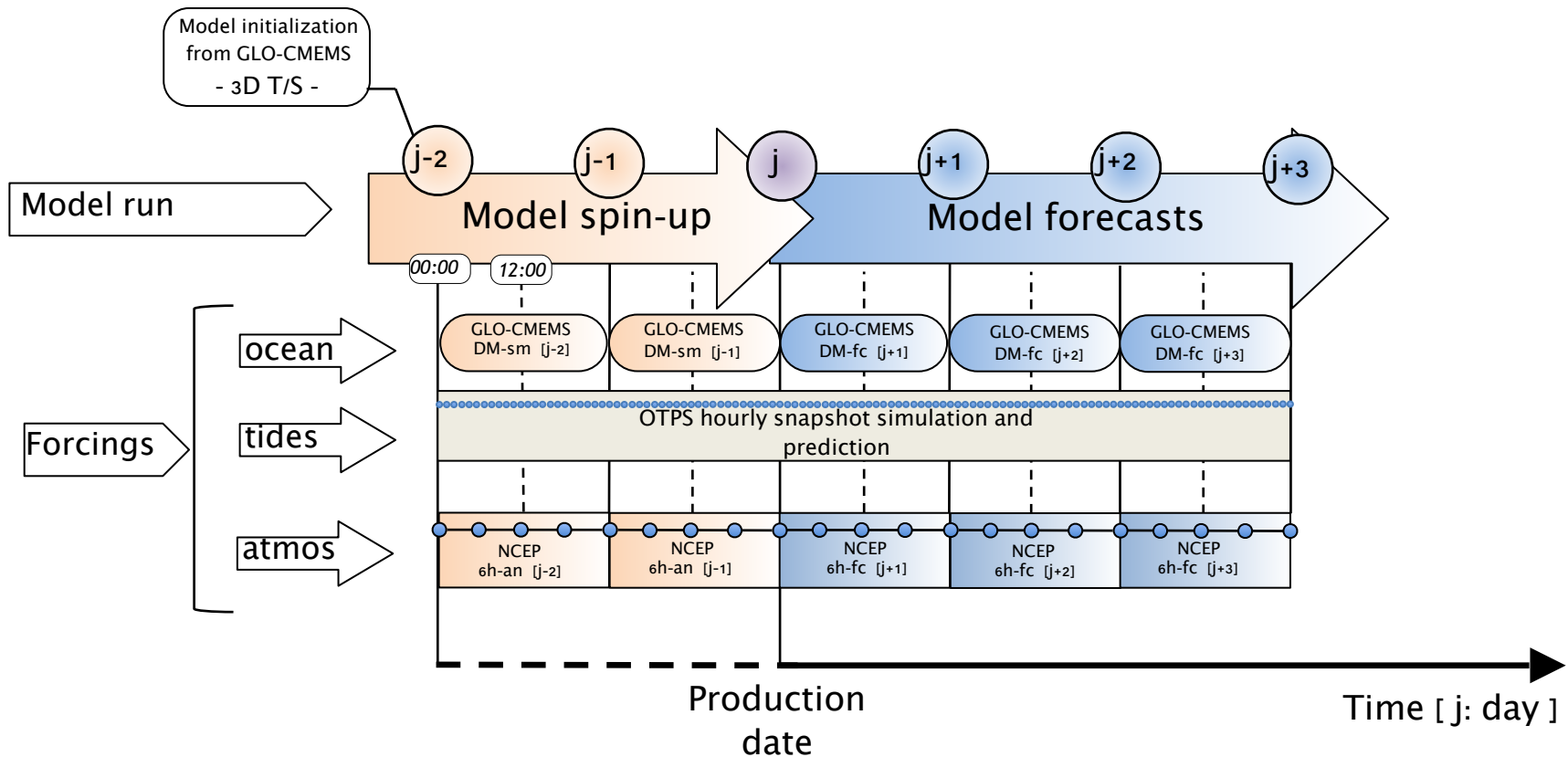
**water level, temperature, salinity,**  
humidity, precipitation



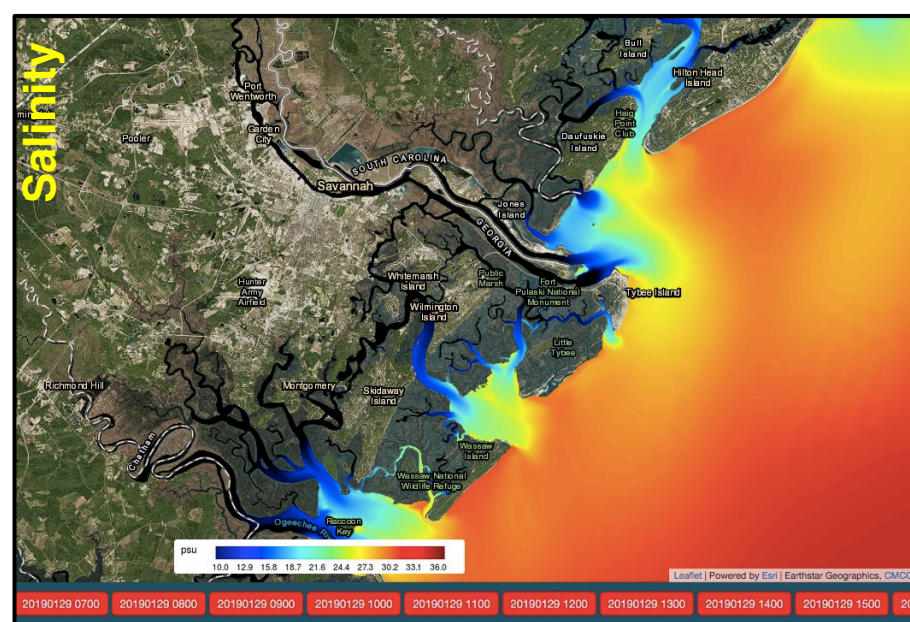
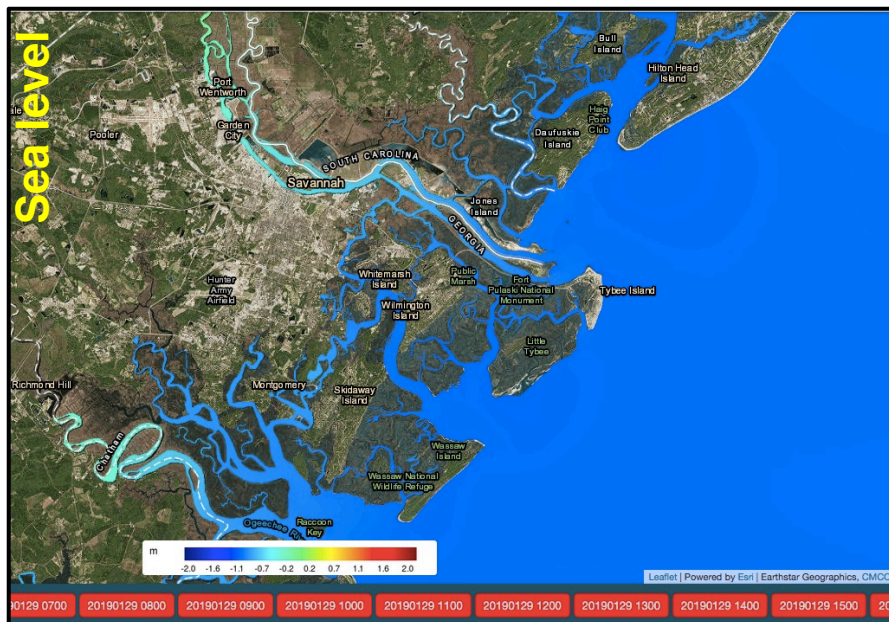
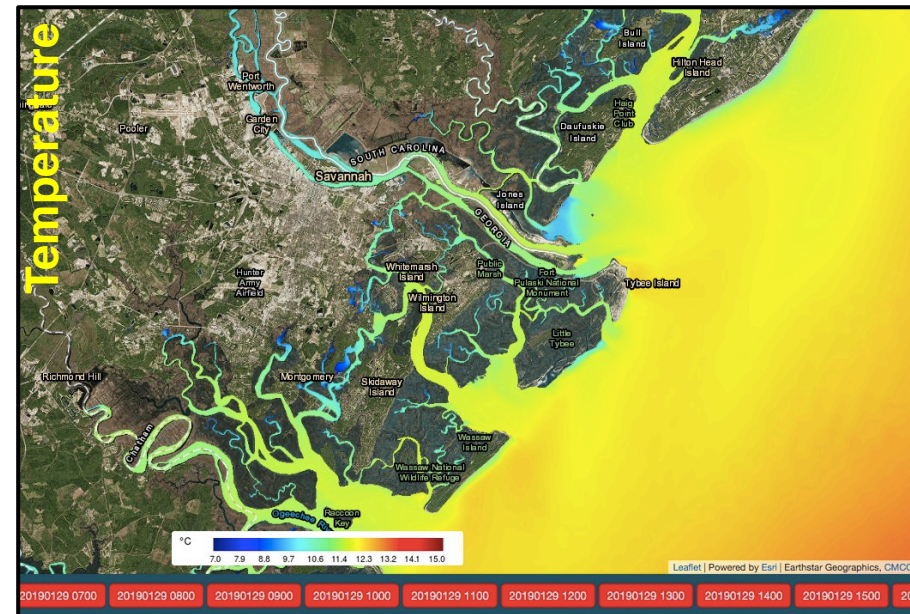
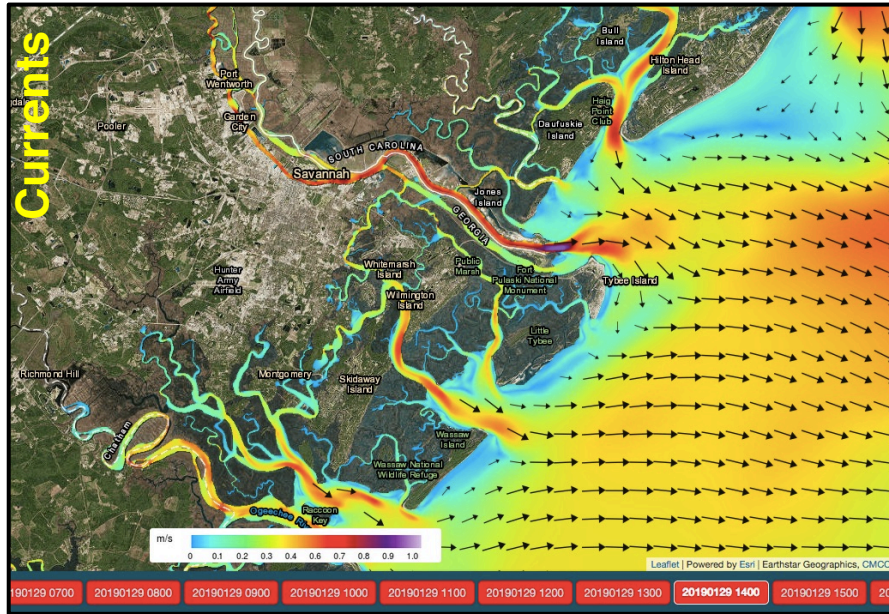


# The Daily Forecast Cycle

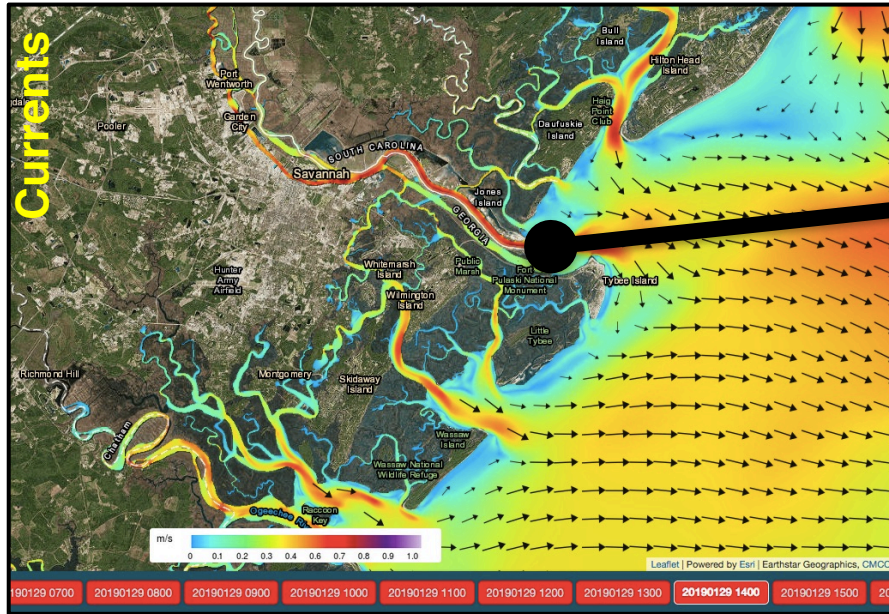
**water level, temperature, salinity,**  
humidity, precipitation



# Real-Time Forecasts online — <http://savannah.cmcc-opa.eu/>



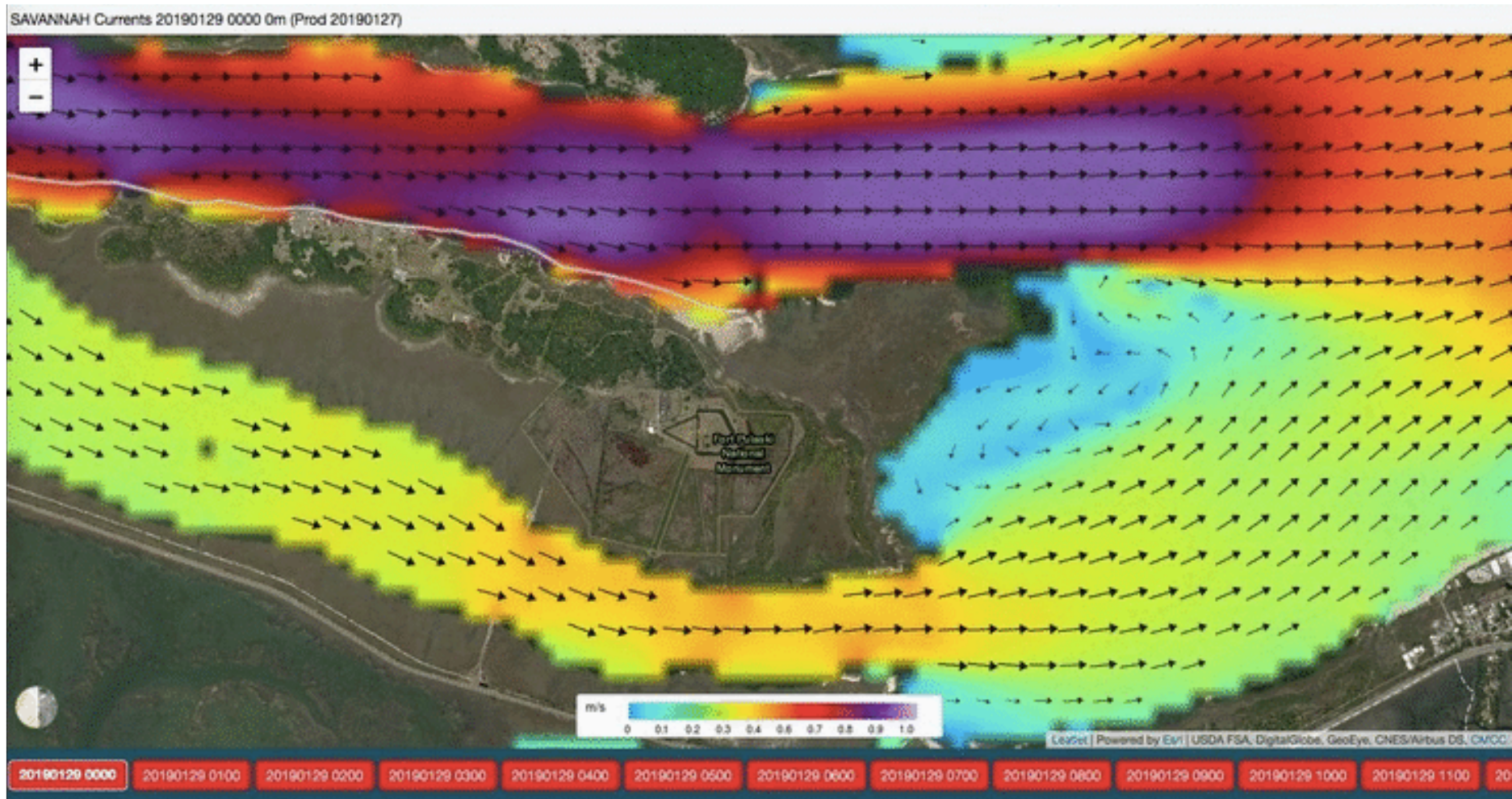




I was driving to Tybee Island yesterday ....

# Today Forecast (2019-01-29):

## Surface Currents and Water Level



2AM

7AM

11AM

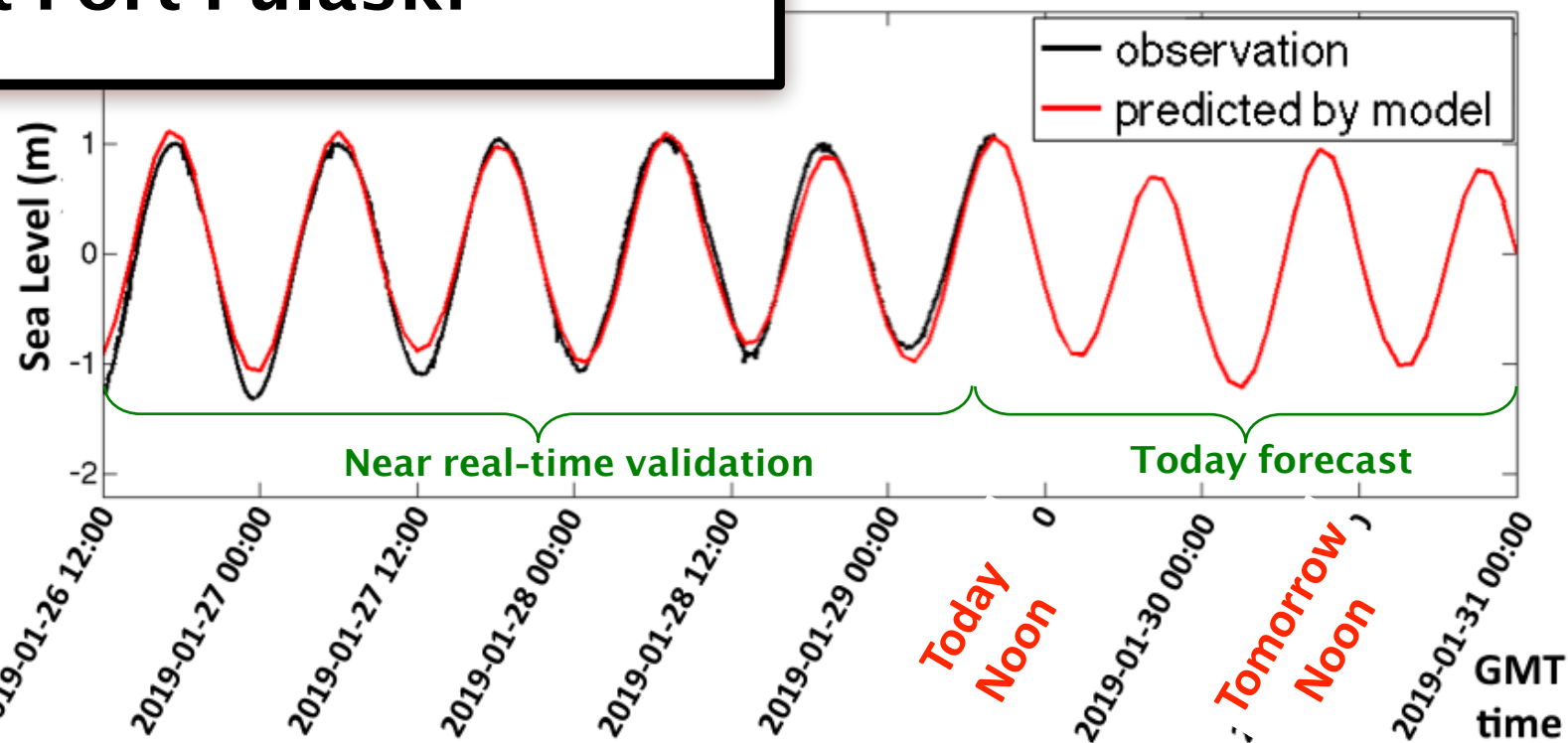


Today Forecast (2019-01-29):

## Surface Currents and Water Level

SAVANNAH Currents 20190129 0000 0m (Prod 20190127)

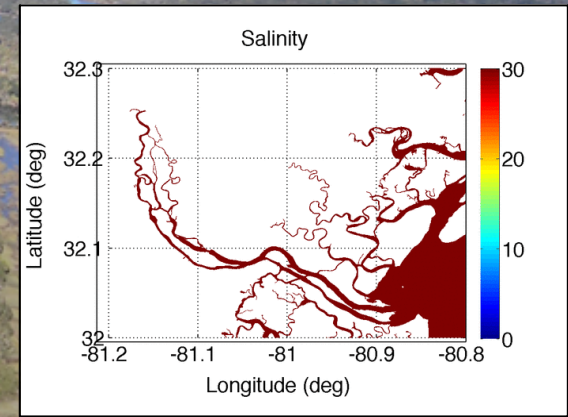
### Water Level Forecast at Fort Pulaski





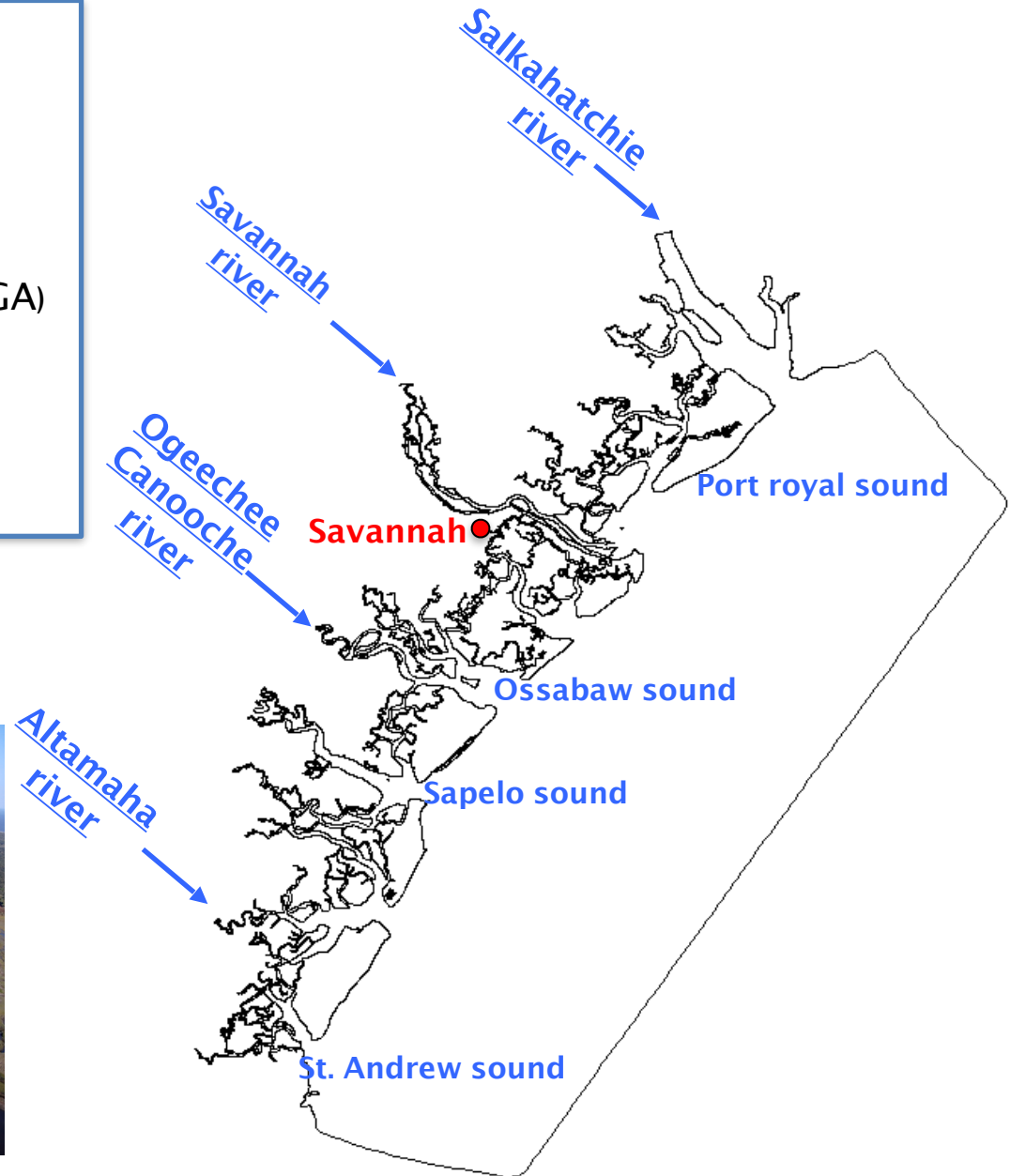
# Rivers and Stream Flows

**The GA coast looks like a big heart!**



# Rivers and Stream Flows included in the Model

- Salkahatchie river (SC)
- Port royal sound (SC)
- Savannah river (GA)
- Ogeechee & Canooche rivers (GA)
- Sapelo sound (GA)
- Altamaha river (GA)
- St. Andrew sound (GA)



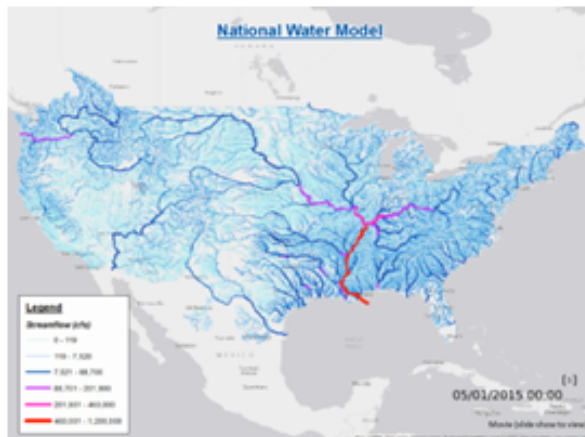


# Rivers and Stream Flows included in the Model

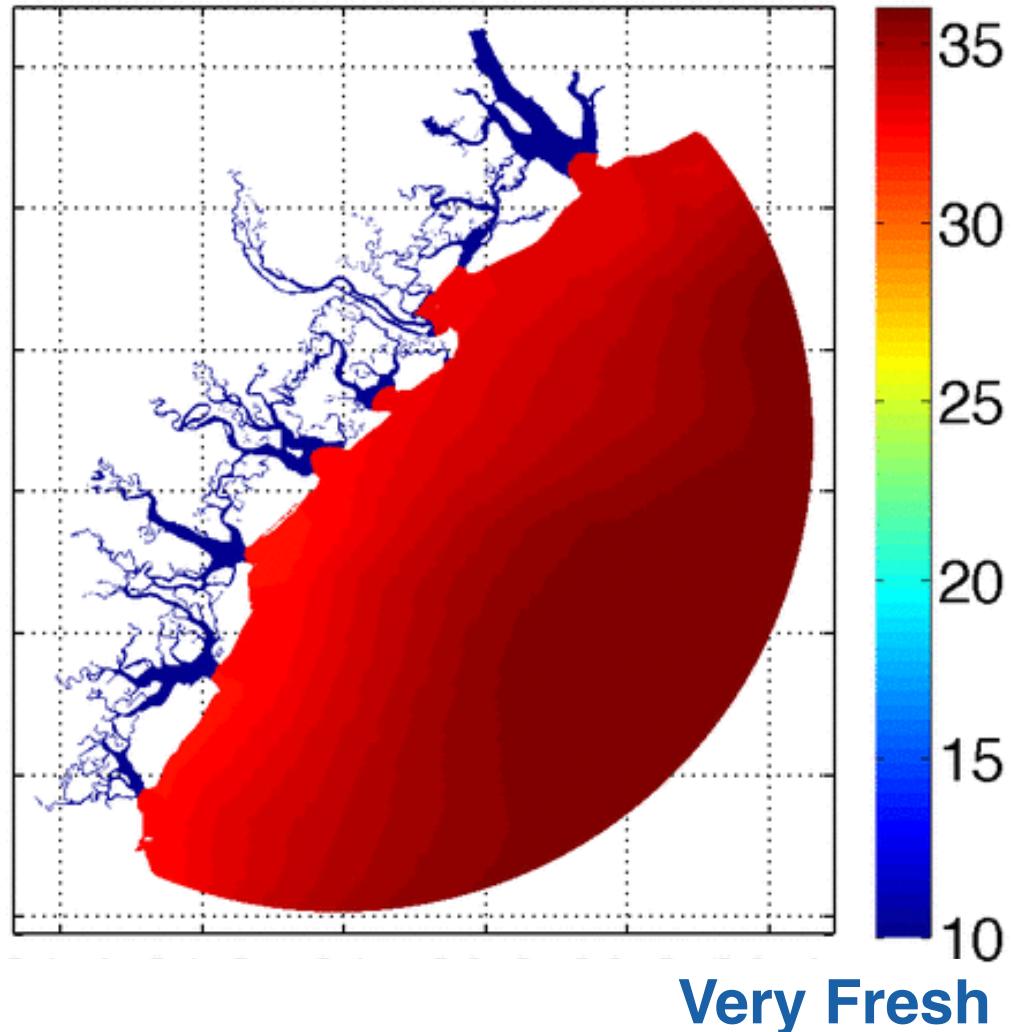
- Salkahatchie river (SC)
- Port royal sound (SC)
- Savannah river (GA)
- Ossabaw sound (GA)
- Ogeechee & Canooche rivers (GA)
- Sapelo sound (GA)
- Altamaha river (GA)
- St. Andrew sound (GA)

## National Water Model Operational Forecasts

NWM Streamflow Output Points (~2.7 mil)

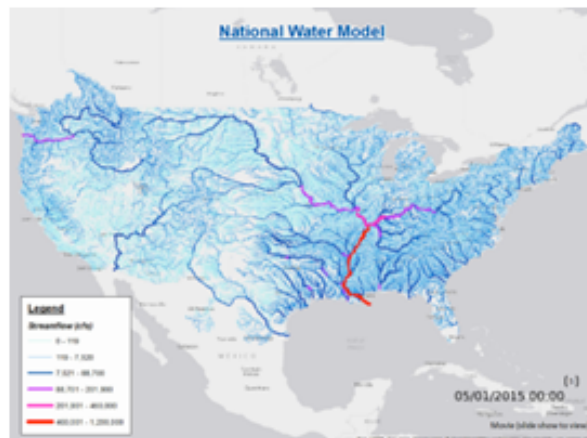


## Fresh Water (Salinity)



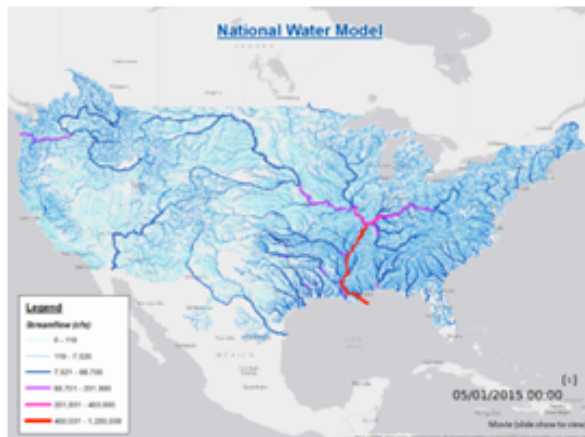
# National Water Model Operational Forecasts

NWM Streamflow Output Points (~2.7 mil)



# National Water Model Operational Forecasts

NWM Streamflow Output Points (~2.7 mil)



+

Current River Forecast Points (~3,600)



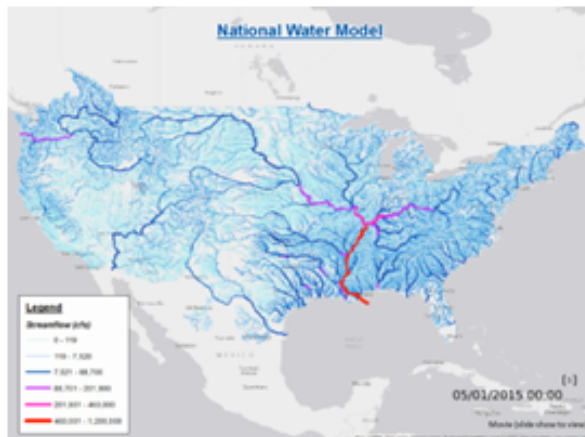


## Regional Atmosphere & Land Hydrology Model

In development ...

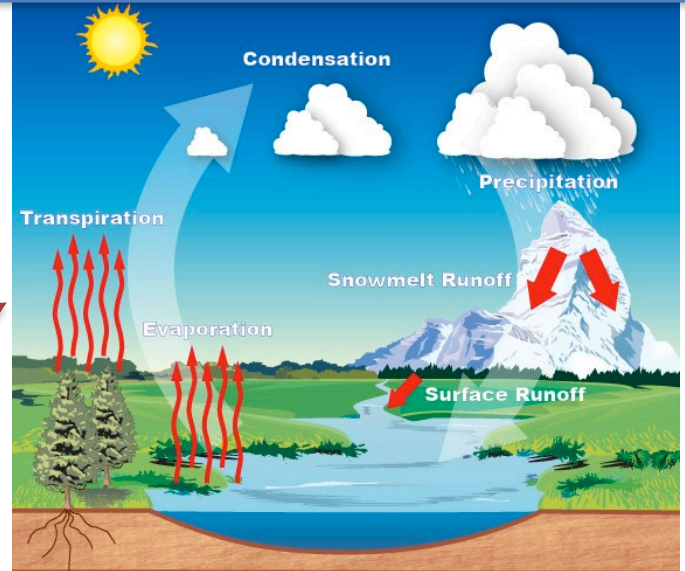
## National Water Model Operational Forecasts

NWM Streamflow Output Points (~2.7 mil)

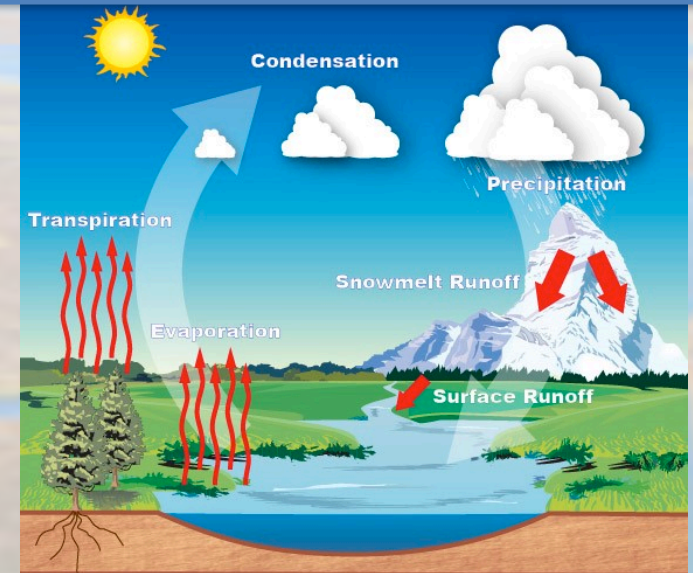


+

Current River Forecast Points (~3,600)



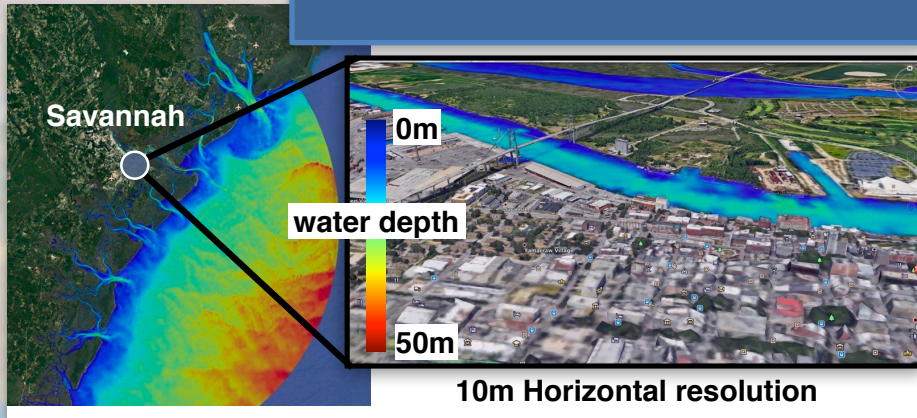
# Regional Atmosphere & Land Hydrology Model



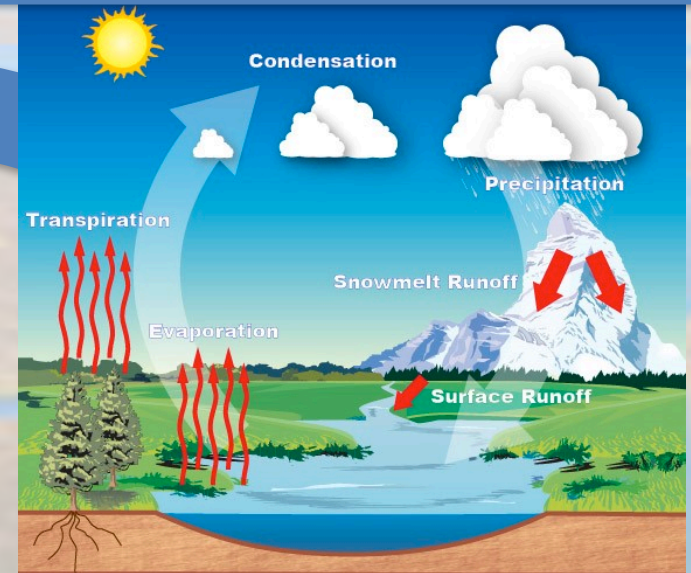


# Regional Earth System Model

## Coastal Water and Ocean Model

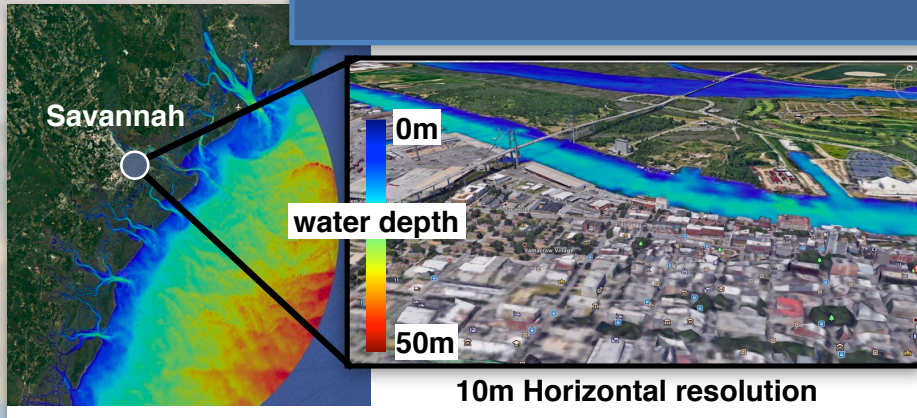


## Regional Atmosphere & Land Hydrology Model

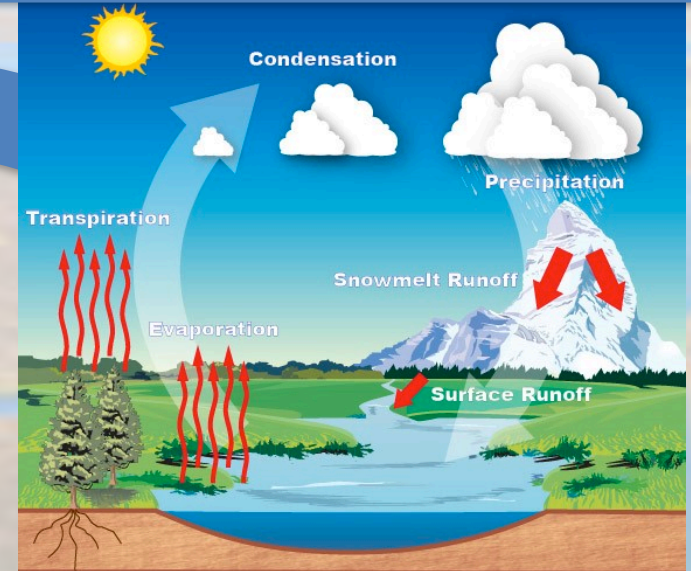


# Regional Earth System Model

## Coastal Water and Ocean Model



## Regional Atmosphere & Land Hydrology Model



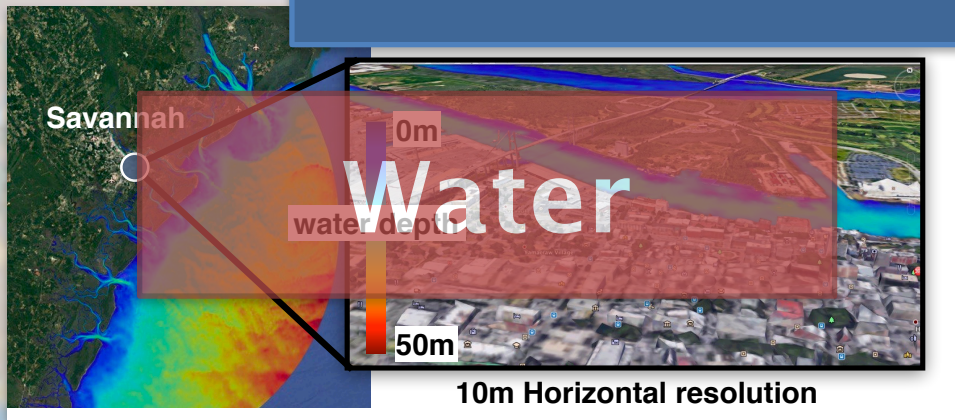
## Urban Flooding Models with Infrastructure



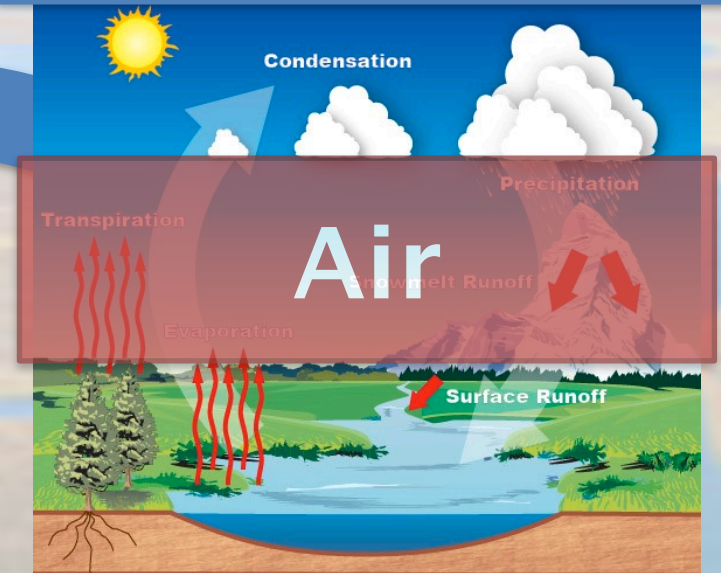


# Regional Earth System Model

## Coastal Water and Ocean Model



## Regional Atmosphere & Land Hydrology Model



## Urban Flooding Models with Infrastructure



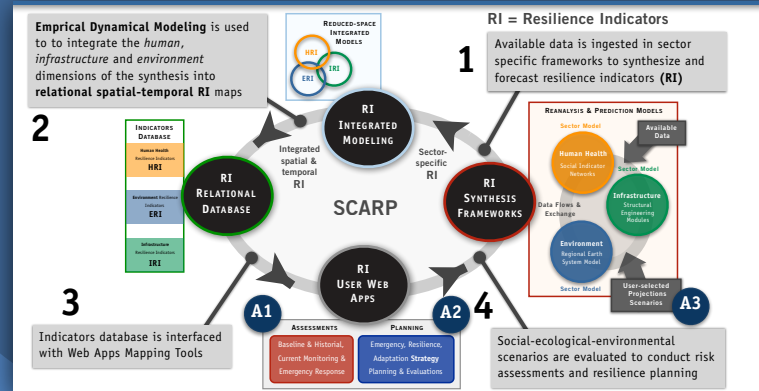


# Regional Earth System Model

## Regional Atmosphere & Land Hydrology Model

## Coastal Water

### Smart Coastal Area Resilience Planning (SCARP) Tool



## Urban Flooding with Infrastructure

## People

# OCEANVISIONS

science and engineering  
to enable solutions

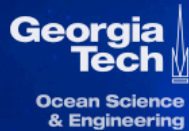


[www.OceanVisions.org](http://www.OceanVisions.org)



# OCEANVISIONS

science and engineering  
to enable solutions



[www.OceanVisions.org](http://www.OceanVisions.org)

*“Bringing scientists and engineers together to discuss research  
in the context of ocean solutions through engagement with  
stakeholders and decision-makers”*

# OCEANVISIONS

science and engineering  
to enable solutions



April 1-4, 2019

## OCEANVISIONS2019 - CLIMATE

Successes in resilience, adaptation, mitigation  
and sustainability





# Workshop

## Sea Level Hotspots from Florida to Maine



**GOAL:** Map the landscape of coastal resilience efforts and establish a network of science/engineers/stakeholder that share experiences and methods.