

Xylem Branded Solutions

JON FAJANS
OCEAN & COASTAL
APPLICATIONS SPECIALIST-
FIELD SERVICE ENGINEER
XYLEM ANALYTICS-AMERICAS





Our People

Approximately 17,000



Our Customers

Partnering with our customers to build strong, lasting relationships



Our Solutions

Bringing together advanced technologies, application expertise and smart sustainable solutions



Our Brands

Market-leading brands with a legacy of over 100 years supported by a solid TotalCare service portfolio

We care for water...



... and beyond



Operating in

~400 locations
in more than 50 countries
sold in ~150 countries

xylem watermark. Because Every Drop Counts

Our corporate citizenship & social investment initiative

Providing safe water and sanitation solutions since 2008 to **3.5 million+** people

Responded to **40+** water-related disasters with clean water infrastructure

Community partnership grants (since 2016) **54**

Engaging our employees, customers and partners

110,000+ hours volunteered (2016-2018)

Annually, **45%** employees engaged in **730** events

2018 Revenue



NYSE
Trade Symbol **XYL**

Global Headquarters

Tel +1 914-323-5700
Fax +1 914-323-5800
www.xylem.com

Our Brands



AANDERAA

AC FIRE PUMP

Bell & Gossett

BS Bellingham + Stanley

-ebro-

emnet

FLOJET

FLYGT

godwin

GOULDS
WATER TECHNOLOGY



HYPACK

JABSCO

LEOPOLD

LOWARA

mjk

O+Analytical

pureFM

pure
TECHNOLOGIES

rule

SANITAIRE

sensus

SI Analytics

SR
SouthStar



SonTek



TIDELAND

VALOR WATER
ANALYTICS

visenti

WachsWater
SERVICES

WEDECO

WTW



YSI

Integrated Systems and Services-

Services



Integrated Systems and Services is a project based integration and installation house for custom environmental monitoring systems

- Integration
 - Custom integration of Xylem and 3rd party products
 - Dataloggers, Telemetry, Water Quality Sensors, Meteorological Sensors, Controllers
 - Custom Firmware/Software for dataloggers
 - Modbus, SCADA, Storm Central, LoggerNet, Eagle IO, GeoView
- Services
 - On site installation and commissioning of integrated systems
 - Site Surveys
 - Site infrastructure
 - System Installation
 - System Training
 - Site Maintenance
 - Mobile Manufacturing Capabilities

Integrated Systems and Services-

Floating Platforms





Floating Platforms

Floating Profiler

- A System that raises and lowers a water quality sensor (EXO2 Sonde) through the water column collecting data in steps.
- Campbell Scientific Data Logger, cellular or point to point modem, custom winch, and platform
- Additional upgrades: MET Package, Power Upgrade, Additional Water Sensors



Pisces



Flow-through water quality monitoring

EMM-68 and EMM-150



- Data Logger
- Telemetry
- MET & WQ
Sensor
Packages
- Power Source
- Small Footprint

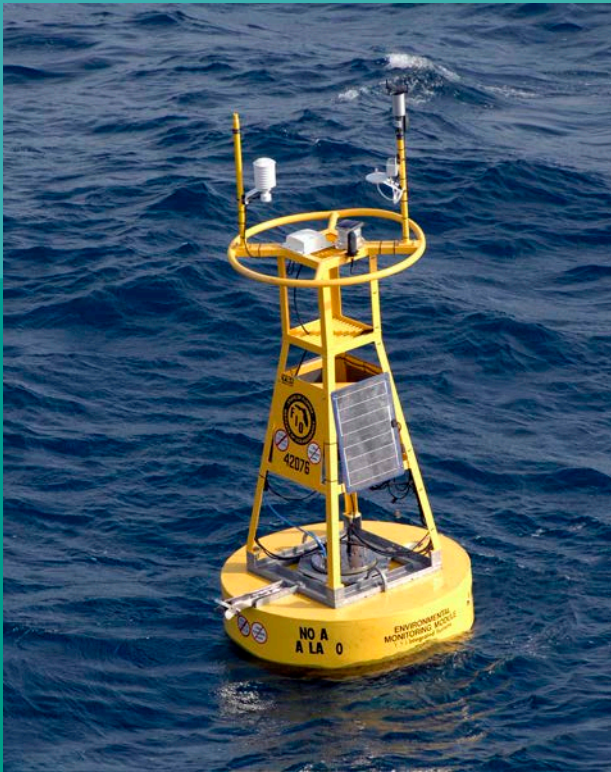


EMM 700

- Data Logger
- Telemetry
- MET & WQ
Sensor
Packages
- Power Source



EMM 2000 and 2.0





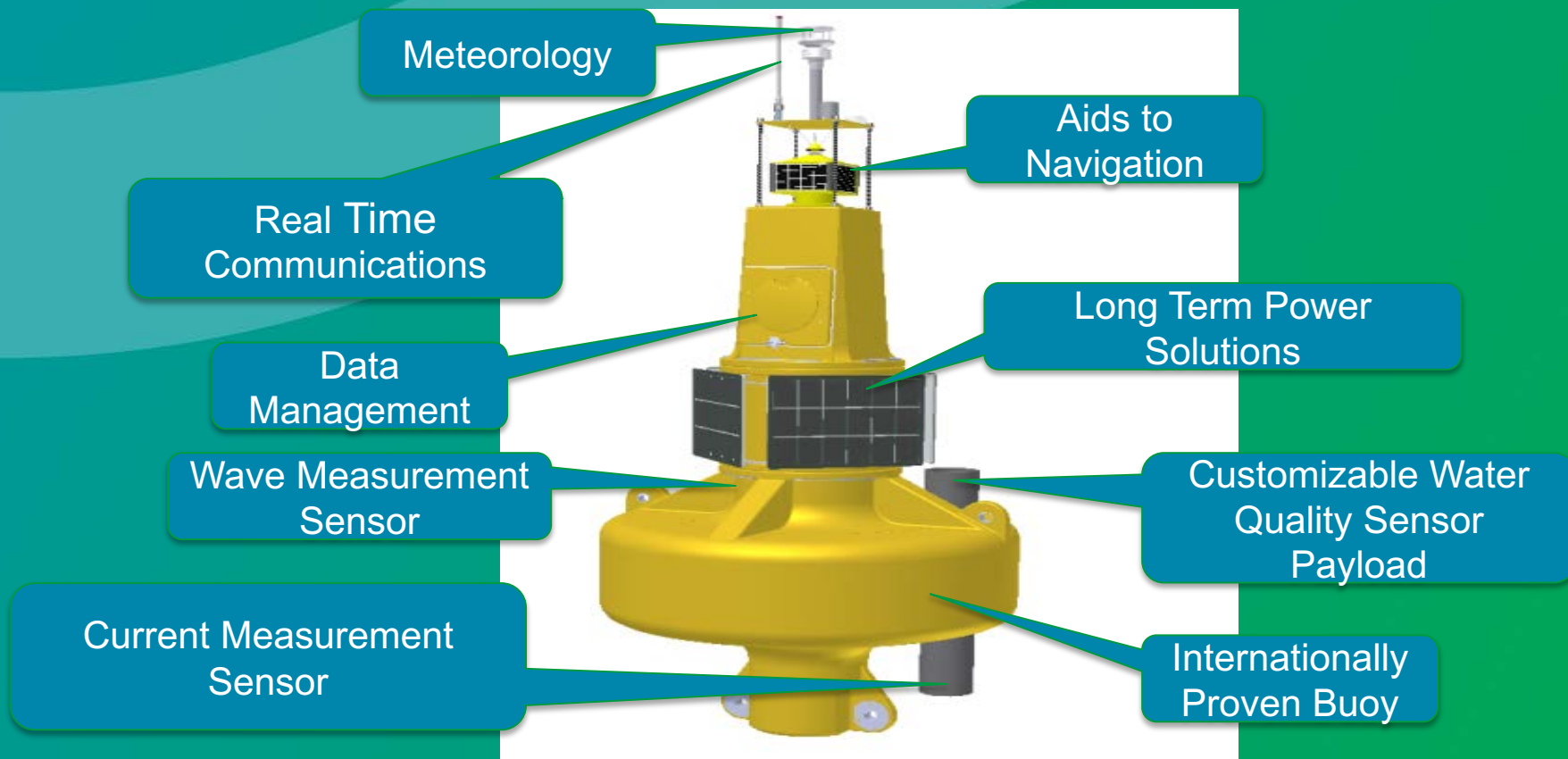
SB 138, 2200, 285 buoys from Tidelands

MOTUS Wave Buoys

Powered By the Aanderaa MOTUS Directional Wave Sensor



Measure accurate wave parameters with the flexibility of a Met-Ocean buoy. Tidelands SB-138



Instrumentation Packages

Wave



- Height
- Period
- Direction

Currents



- Single point
- Current Profile
- Discharge Measurements
- Upward Looking
- Side Looking
- Downward Looking

Water Quality



- Temperature
- Conductivity
- Dissolved Oxygen
- pH/ORP
- Turbidity
- fDOM
- Chl-a/BGA
- Hydrocarbons

Meteorology



- Wind Speed/Direction
- Barometric Pressure
- Air Temperature
- Relative Humidity
- Solar Radiation
- Visibility/Fog
- Rain/Hail

Additional Buoy Packages

Aids to Navigation



- Lights
- AIS
- RACON

Communication & Data Management



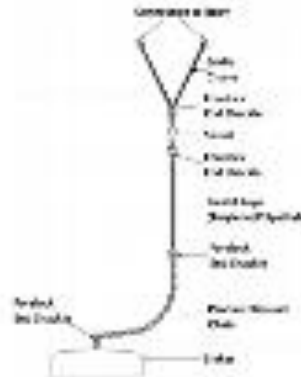
- Data loggers
- GOES/Iridium
- Cellular
- Acoustic Modems
- AIS

Power Solutions



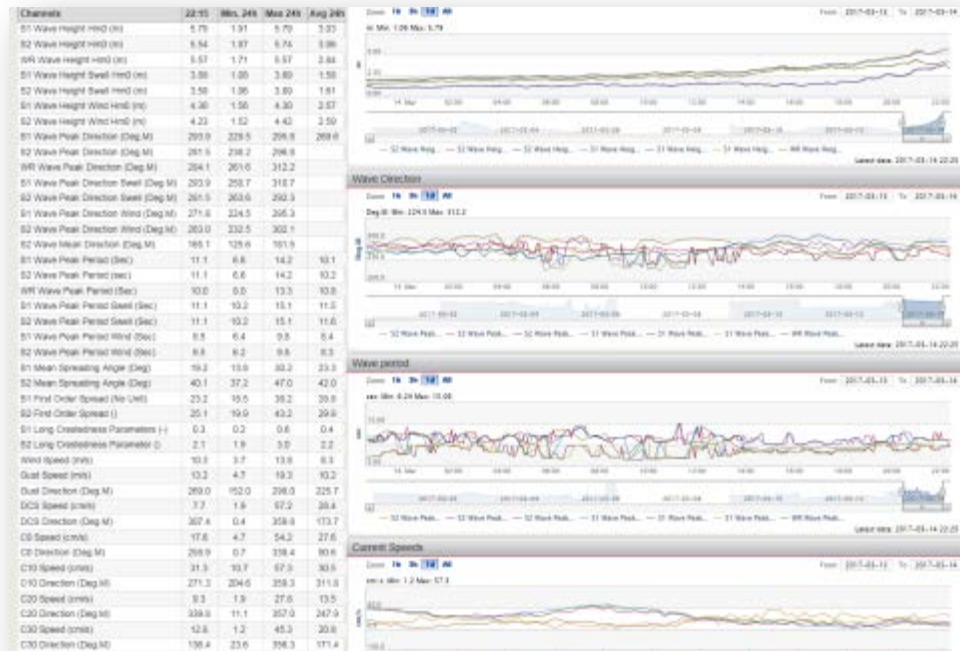
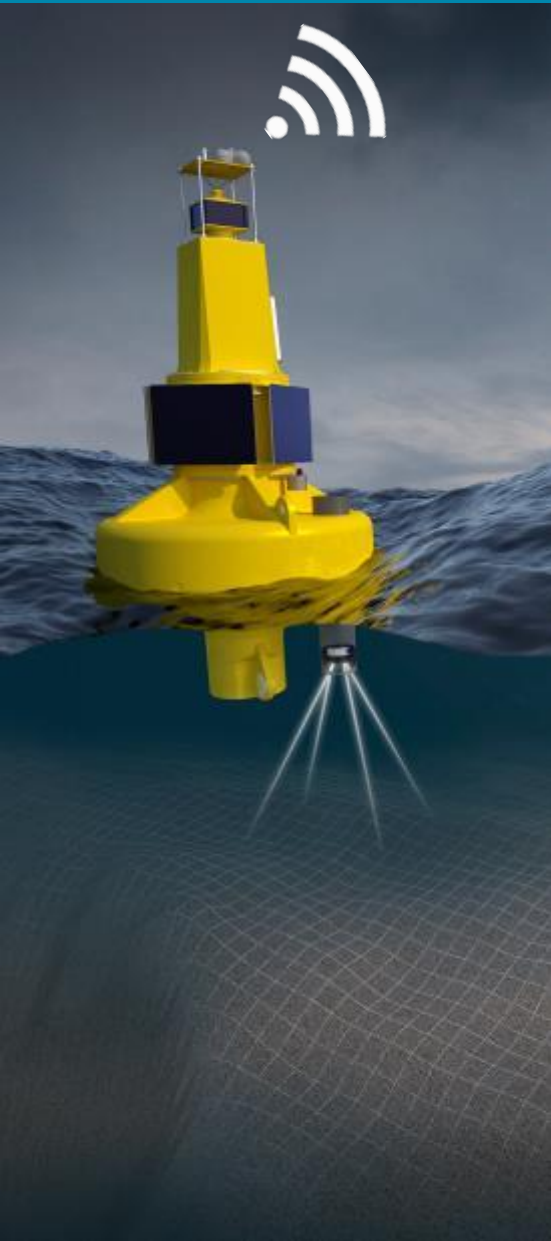
- Solar
- Battery
- Power manager

Mooring



- Wide Variety to match needs

Real Time and Historical Information with GeoView, Storm Central, Eagle IO



GeoView provides vast opportunities for interfacing meteorological, oceanographic or other environmental research equipment in a networked solution giving access to data real-time.

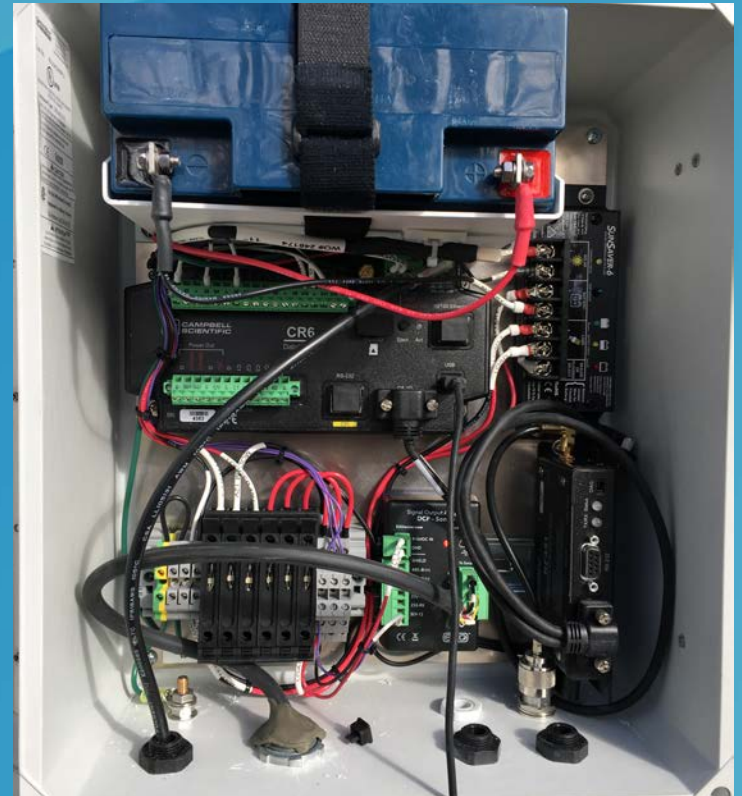
Integrated Systems and Services-

Fixed Platforms



TK (Turn Key System)

- A mountable, environmentally protected box
- Datalogger (Storm, Campbell, or Customer Specified)
- Telemetry (Cellular, Satellite, GOES, or Point to Point)
- Power (Solar or A/C)
- Sensors (YSI, Sontek, Aanderaa, Waterlog, or Customer Specified Third Party)



Fixed Profiler

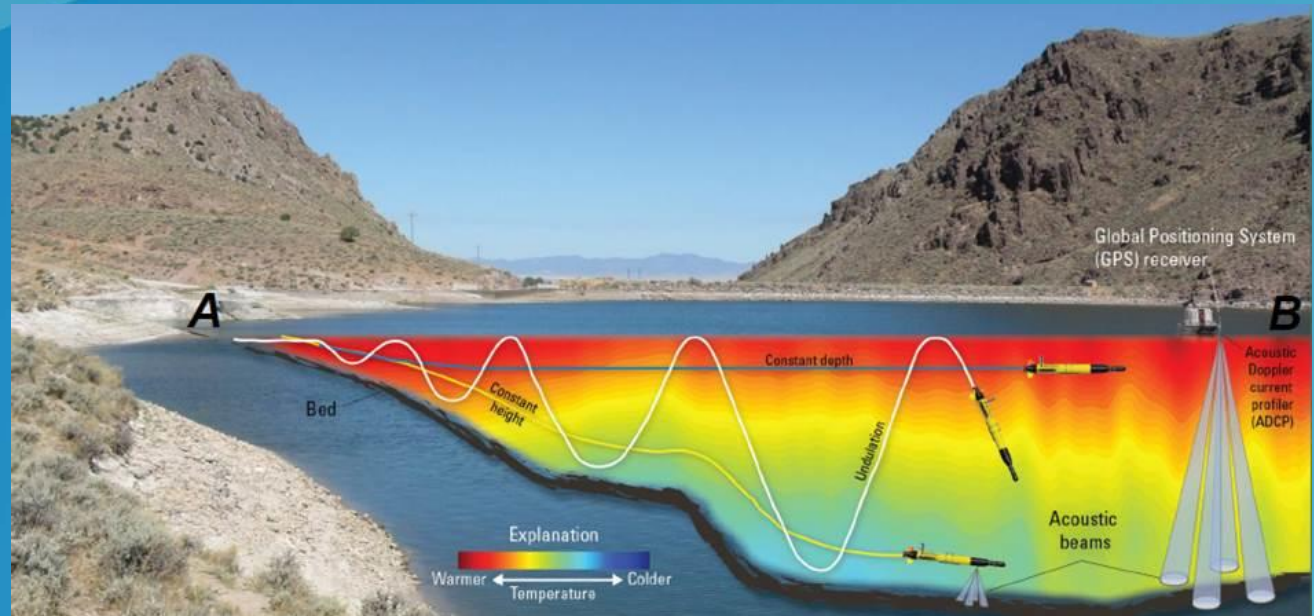
- A System that raises and lowers a water quality sensor (EXO2 Sonde) through the water column collecting data in steps.
- Campbell Scientific Data Logger, cellular or point to point modem, custom winch, and platform
- Additional upgrades: MET Package, Power Upgrade, Additional Water Sensors



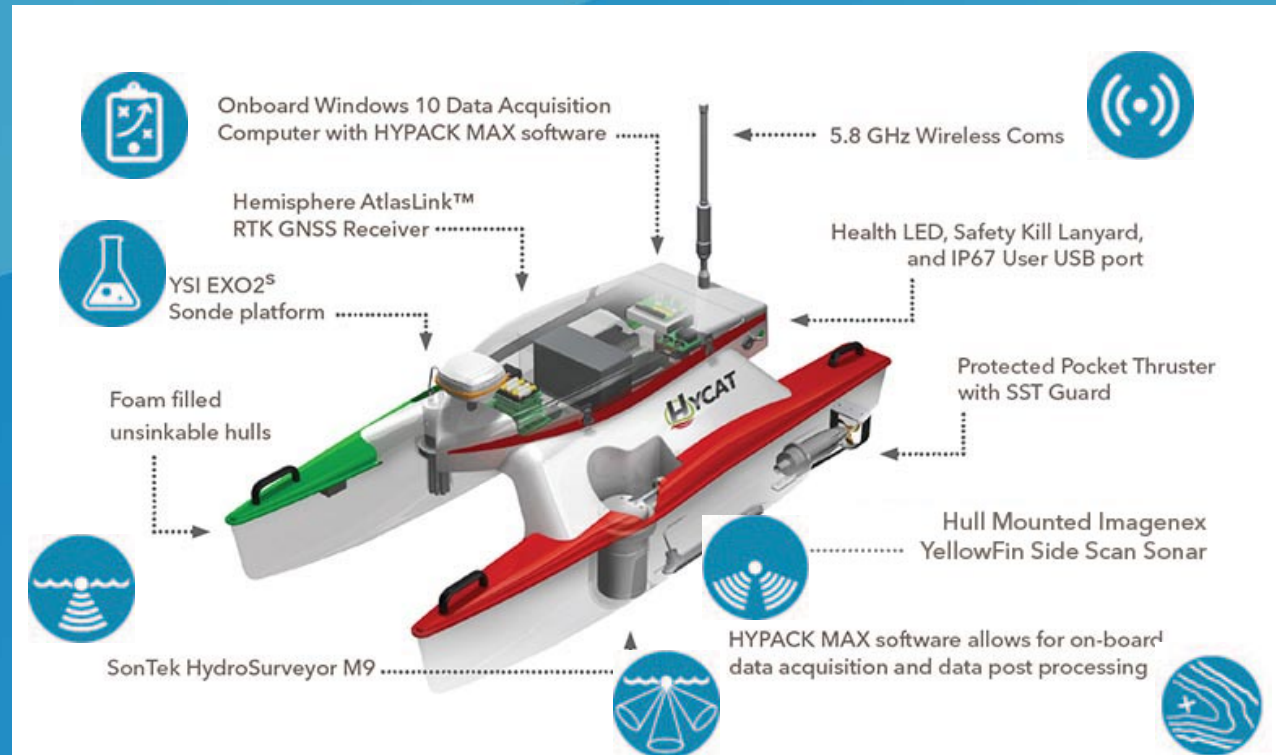


Tides, Currents and Discharge, WQ

Specialty Equipment-I3XO



Specialty Equipment-HYCAT





Thank you! Questions???