

THE PEW CHARITABLE TRUSTS

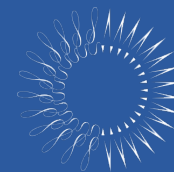
# Ecological Interactions

## Program Managers Session

May 19, 2016

Lora Clarke  
Officer, U.S. Oceans, Southeast

# Environmental Initiatives



THE  
**PEW**  
CHARITABLE TRUSTS



## Protecting Ocean Life

Our marine work is aimed at preserving the biological integrity of marine ecosystems and primarily focuses on efforts to curb overfishing, reduce bycatch and prevent the destruction of marine habitat.



## Wilderness Protection

Pew works to protect wilderness areas and public lands, both within the United States and around the globe.

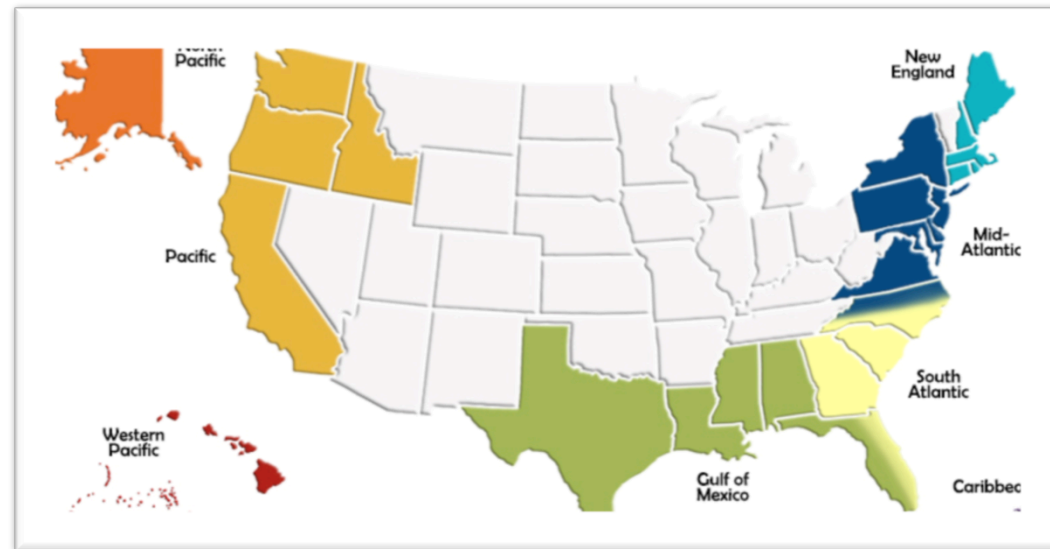


## Energy

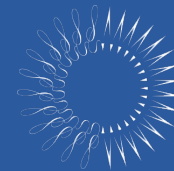
Advocating for national policies that promote the economic, environmental and national security benefits of the clean energy economy.

# Protecting Ocean Life

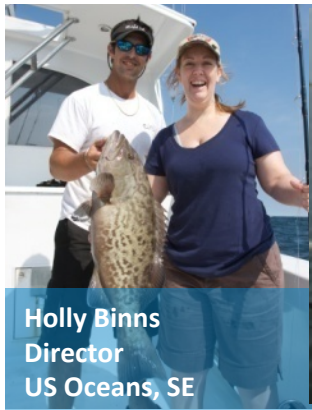
- Our Role: Work with Regional Fishery Management Councils and stakeholders to advocate for policies that promote sustainable fisheries, healthy ecosystems, and thriving coastal communities.
- Staff work with each of the 3 Councils in the Southeast
- Develop and advocate for sustainable policy solutions
- Support and catalyze scientific research that helps to inform management decisions



# Southeast Oceans Team



THE  
**PEW**  
CHARITABLE TRUSTS



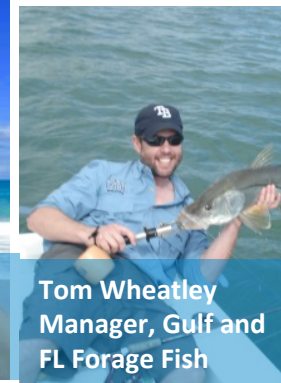
**Holly Binns**  
Director  
US Oceans, SE



**Leda Dunmire**  
Manager  
S. Atl., Caribbean



**Yasmin Vélez-Sánchez**  
Manager  
Caribbean



**Tom Wheatley**  
Manager, Gulf and  
FL Forage Fish



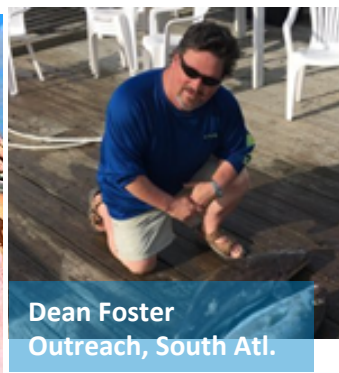
**Terican Gross**  
Administrative  
Assistant  
US Oceans, SE



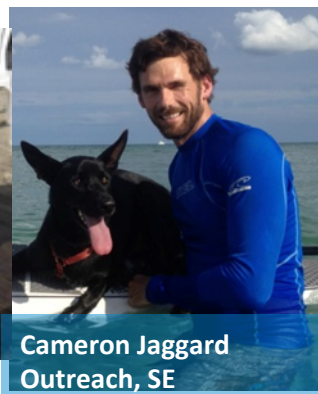
**Debbie Salamone**  
Communications



**Lora Clarke**  
Policy/Science, S. Atl.,



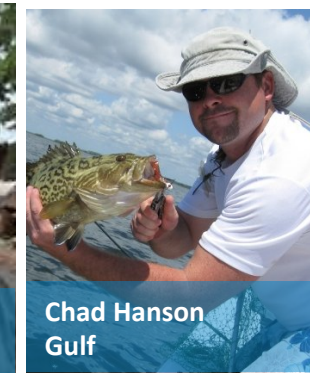
**Dean Foster**  
Outreach, South Atl.



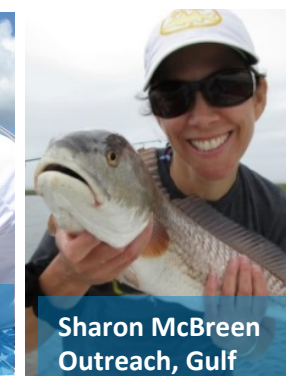
**Cameron Jaggard**  
Outreach, SE



**Justin Grubich, PhD**  
Policy/Science, SE



**Chad Hanson**  
Gulf



**Sharon McBreen**  
Outreach, Gulf



THE **PEW** CHARITABLE TRUSTS

[pewtrusts.org](http://pewtrusts.org)

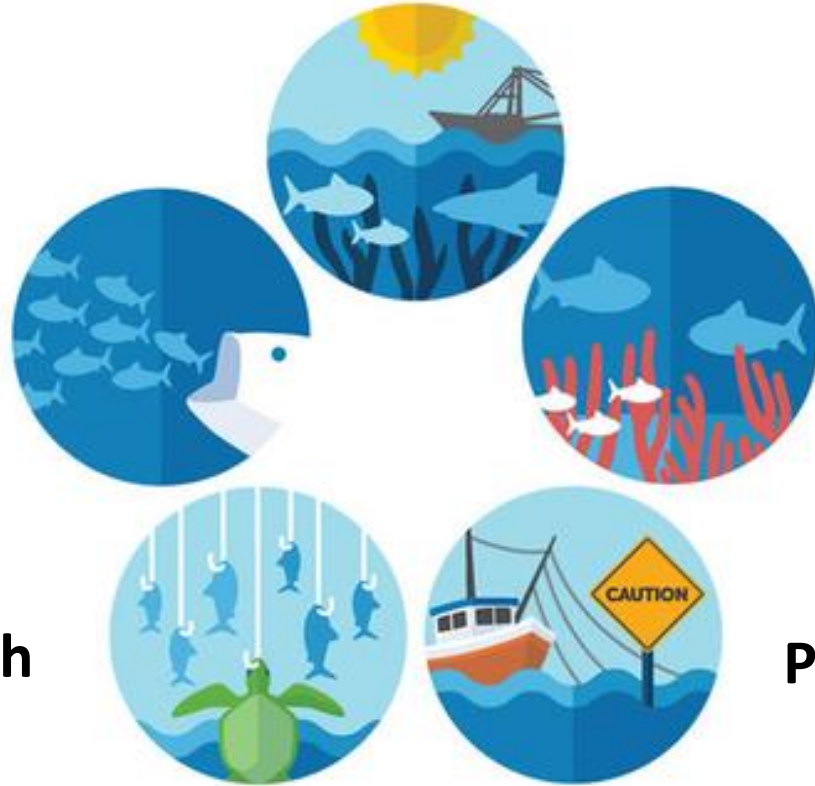
# Big-Picture Fisheries Management

## Adopting an ecosystem approach



### Create Fishery Ecosystem Plans

**Conserve Forage Species**



**Protect Fish Habitat**

**Avoid Bycatch**

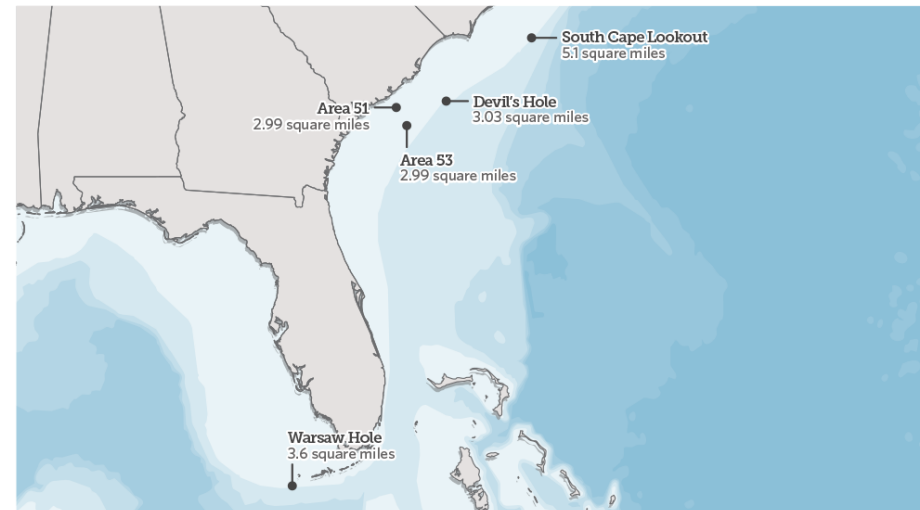
**Proceed with Caution**

# Protect Fish Habitat

- SAFMC recently approved protection of 5 new spawning Special Management Zones for deepwater snapper and grouper
- Supporting cooperative research bringing scientists and fishermen together to identify and study these important sites.



Spawning Special Management Zones



Source: South Atlantic Fishery Management Council

© 2016 The Pew Charitable Trusts

## Partnering with Drs. Malin Pinsky and Jim Morley to examine:

- Long term trends in taxa distribution
- Impact of interannual climate variability on marine taxa
- Impact of winter severity on taxa distribution



<http://oceanadapt.rutgers.edu/>

# Citizen Science

- Working with the SAFMC community to develop a Fishery Citizen Science Program, presenting at IMCC in Canada
- Collaborating on marine citizen science research with Cornell experts
- Helped to organize a workshop in January 2016 to develop program goals and objectives



- Exploring pilot projects that will improve data to support fishery management decisions. Priority areas identified at workshop:
  - environmental data collection
  - monitoring/reducing discards
  - understanding recreational fishing effort

# Opportunities to Collaborate



- We look forward to working with the Southeast fisheries community on ecosystem issues.
- Some examples of our collaborations:
  - SAFMC Fishery Ecosystem Plan Revision
  - Sponsored SAFMC ecosystem and citizen science reception
  - Citizen science workshop steering committee
  - Spawning Special Management Zone cooperative research
  - Pew Marine Fellow Program

# Questions?

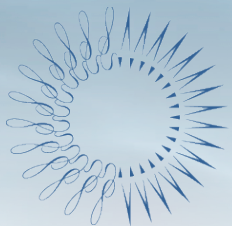


Lora Clarke

[lclarke@pewtrusts.org](mailto:lclarke@pewtrusts.org)

[@LoraClarke14](https://twitter.com/LoraClarke14)

[www.pewtrusts.org](http://www.pewtrusts.org)



THE PEW CHARITABLE TRUSTS