

Land and sea integration through the South Atlantic Landscape Conservation Cooperative

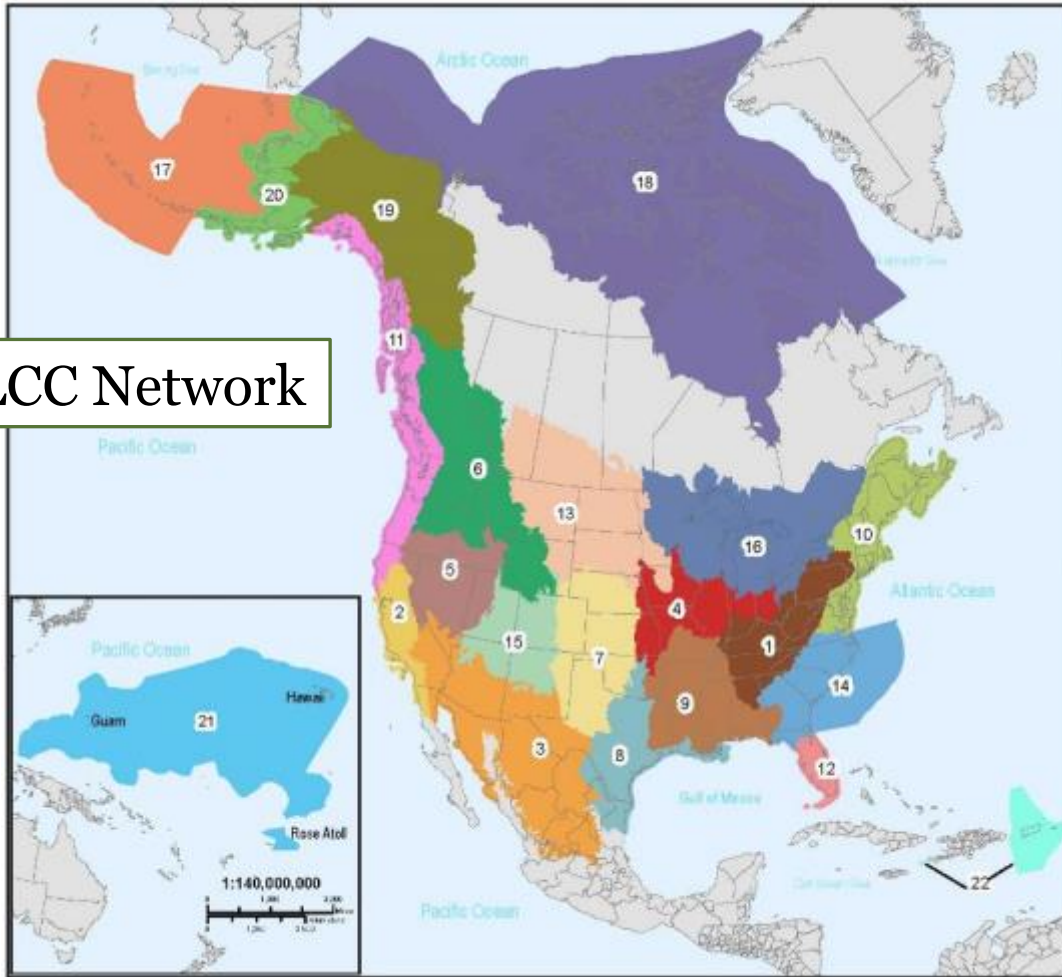
Rua Mordecai, Science Coordinator

SECOORA meeting, Raleigh, NC, 5-19-2016

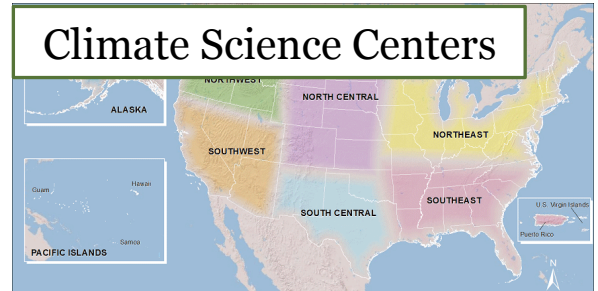


Part of a larger network

LCC Network



Climate Science Centers



NOAA RISAs



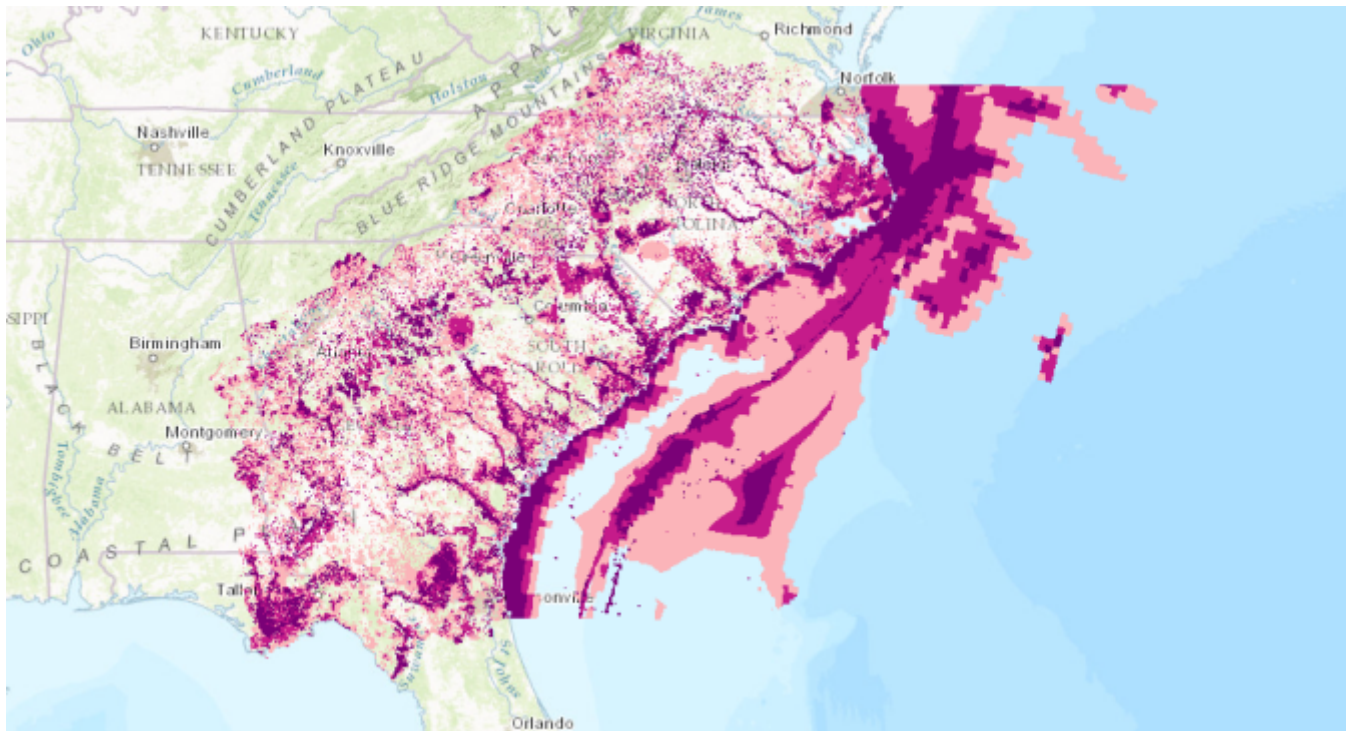
USDA Climate Hubs



What does your cooperative do?

Our mission

To facilitate conservation actions that sustain natural and cultural resources, guided by a shared adaptive Blueprint

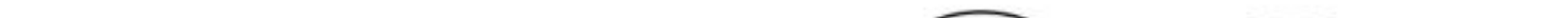


Draft of South Atlantic Conservation Blueprint 2.1



The Blueprint process

- Indicators
- The State of the South Atlantic
- The Blueprint



-





Actions

Land/Water Protection

Land/Water Management

Species Management

Education & Awareness

Law & Policy

Livelihood, Economic & Other Incentives

Impacts

Water quantity/quality

Connectivity

Urban growth

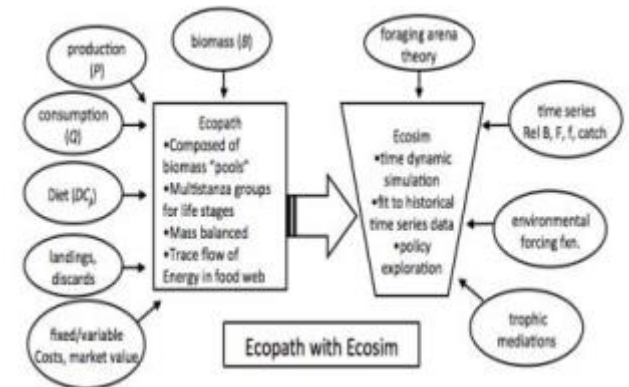
Acidification

Renewable energy

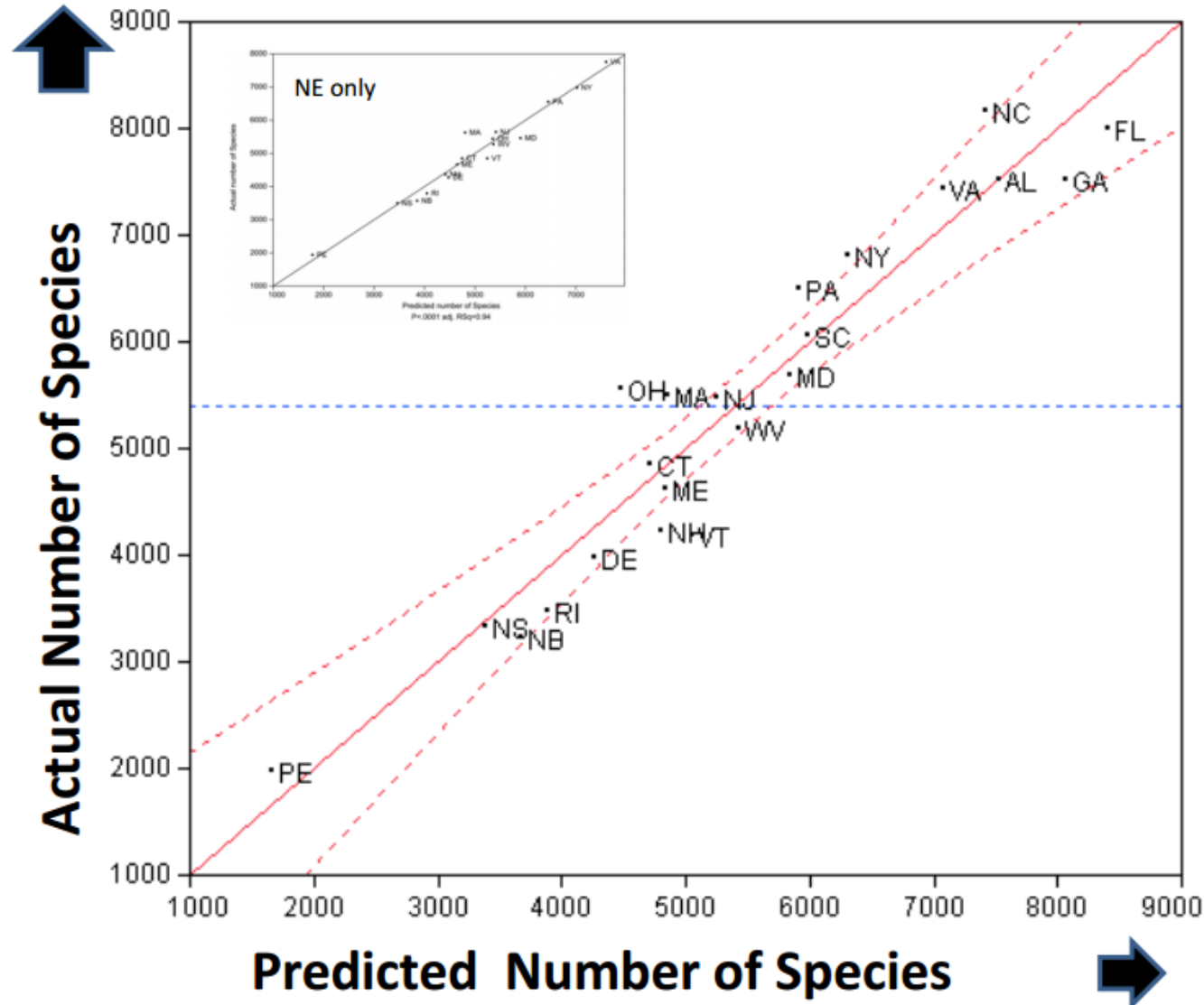
Invasive species

Fishing opportunities

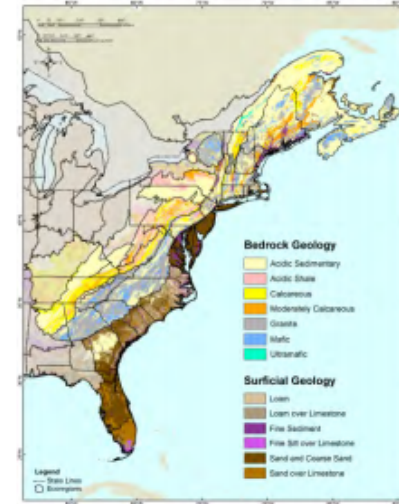
Outcomes



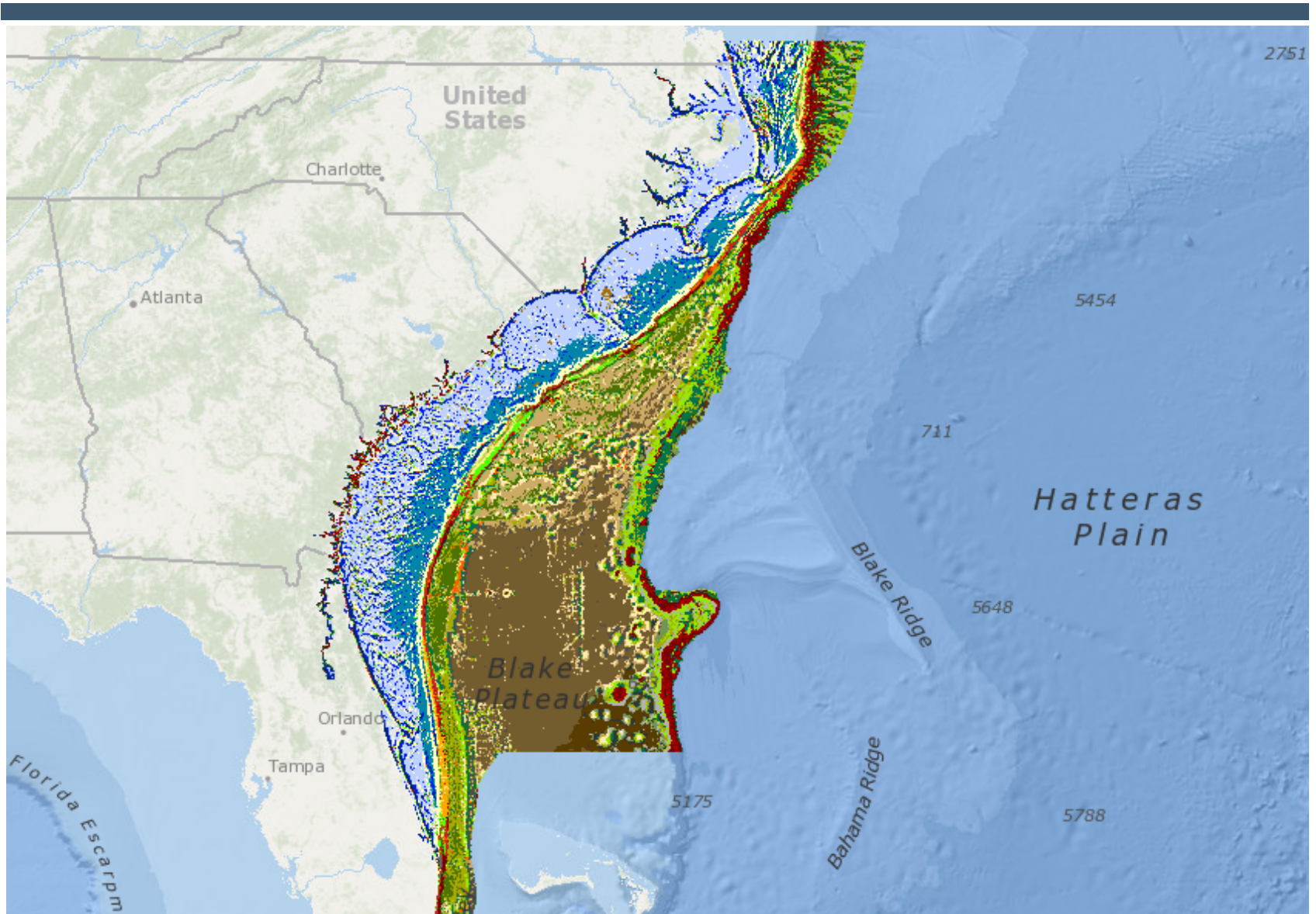
Climate resilience – Conserving the stage



Species Diversity predicted from:
Geology types
Limestone
Latitude
Elevation range



Can this approach also work in the ocean?



Major data needs

- Monthly summaries of modeled data
- Monitoring across gradients
- Data integration across state lines
- Easy access to biological monitoring data



How to get involved with your cooperative

- Join the South Atlantic LCC web community (southatlanticlcc.org)
- Get in touch:
rua@southatlanticlcc.org,
919-707-0122

