



# SECOORA

Southeast Coastal Ocean Observing  
Regional Association

Carl Gouldman, IOOS Program Update

May 18, 2020



IOOS | EYES ON THE OCEAN™



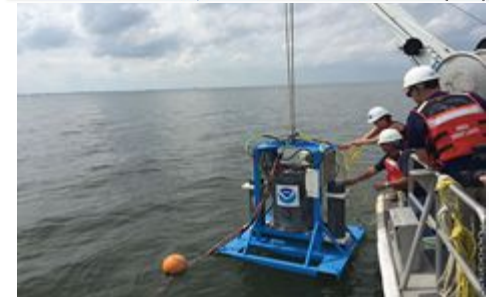
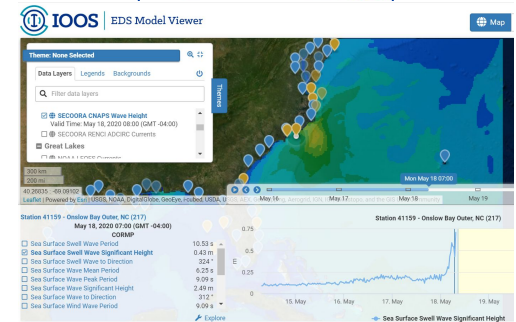
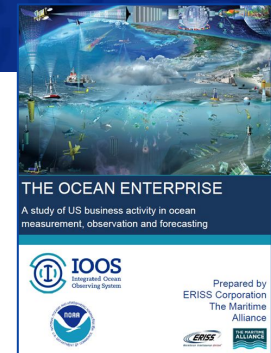
# FY2020 IOOS Highlights

## Implementing IOOS

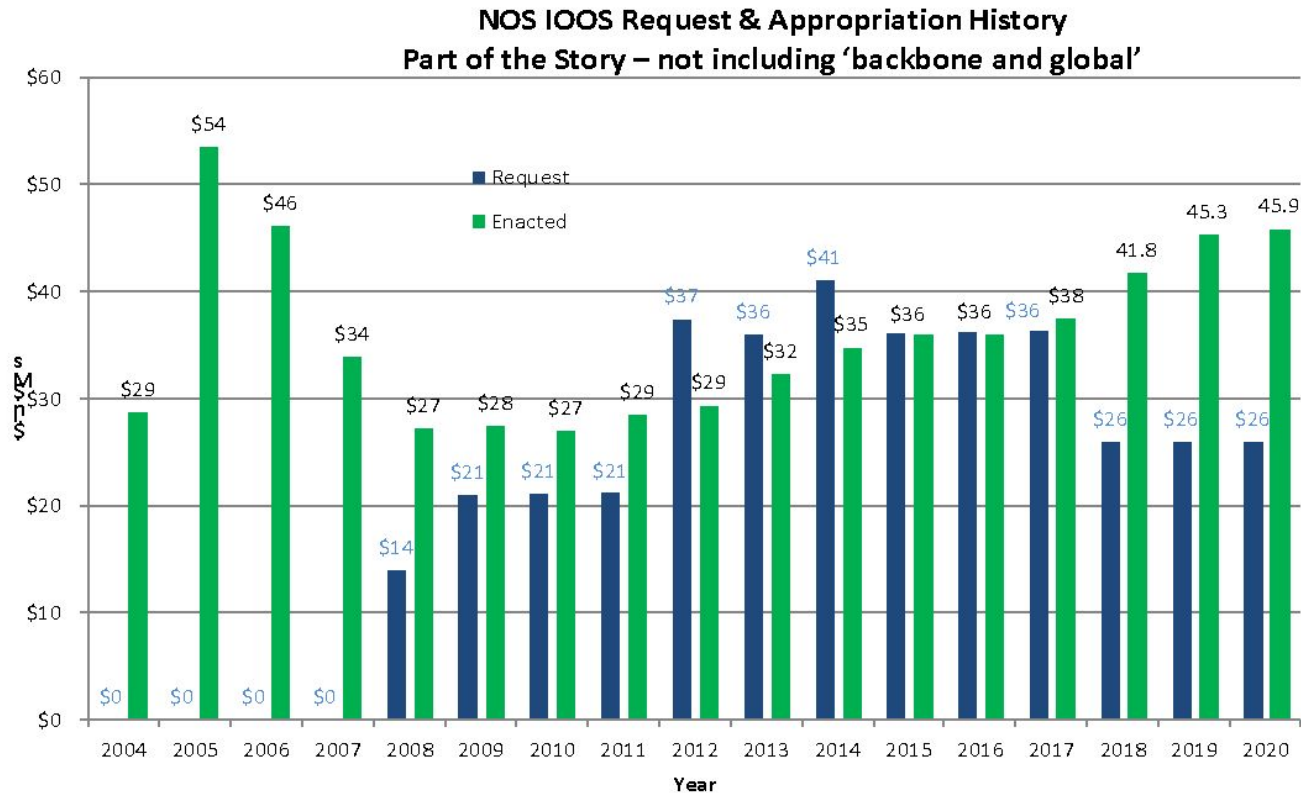
- NOS priority for resilience to coastal inundation, sea level rise, and coastal hazards
- Weather Research and Forecasting Innovation Act 2017&19 – and EPIC implementation and CENOTE Act
  - Hurricane 'picket line' / Ocean&Met data to models
- NOAA Water Initiative - coastal modeling and decision services
- Blue Economy - Ocean Enterprise Study
- Supporting NOAAs 4 strategies – UxS, AI, Cloud, 'Omics
- Regional Ocean Partnerships year 2

## Research and Development

- Coastal and Ocean Modeling Testbed (COMT) - Water Modeling, Forecasting, and Prediction
- Ocean Technology Transition - New Project Awards- FY2020
- Technology, Research and Innovation Workshops - IOOS & OAR - Atlantic - Hurricanes/storms and Biology/HABs



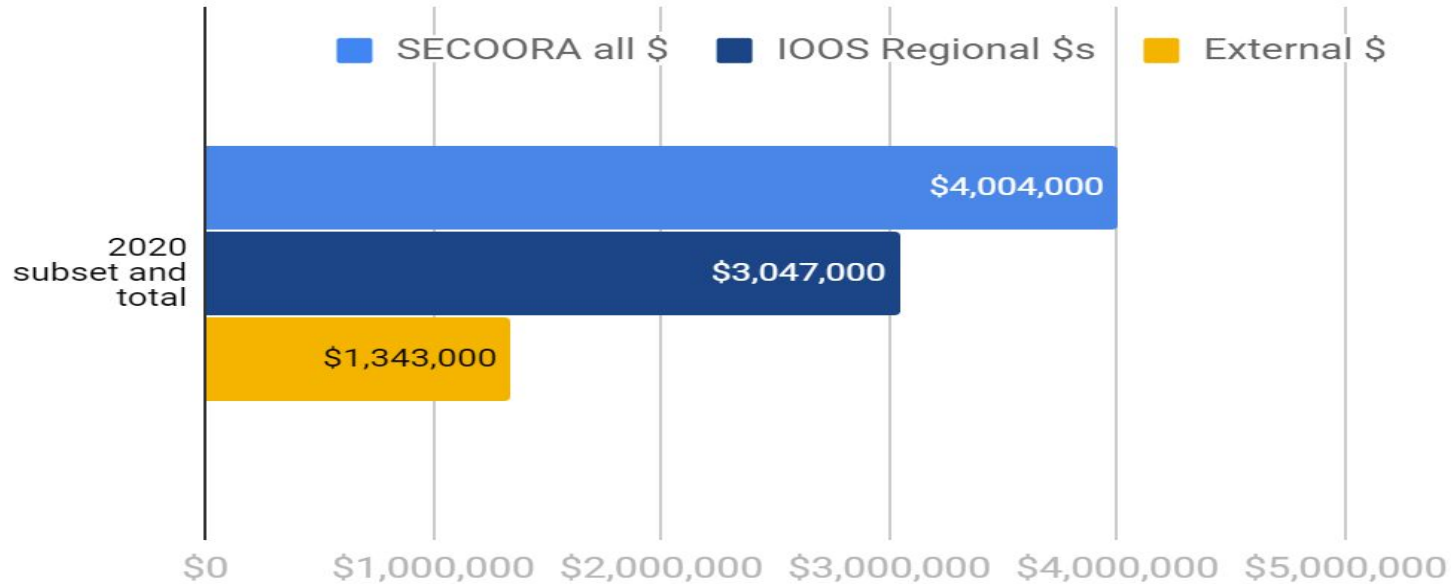
# U.S. IOOS Enacted and President's Budgets FY04-20



- NOAA National Ocean Service - Navigation, Observations, and Positioning: 'National IOOS' component FY20 Omnibus \$6.9M & 'Regional IOOS Observations' \$39M
- FY20 includes \$1M for HAB observing and \$1.5M increase to fill gaps (Regional Ocean Partnerships are funded in Office for Coastal Management at \$1.5M)
- 'Request' = the President's Budget Request – 'Enacted' levels are post rescission totals

# SECOORA leveraging IOOS Regional \$s

## SECOORA FY2020 Estimates of 'All' \$s



- Snapshot estimate of IOOS Regional \$s and other funds coming to SECOORA region (COMT - Blanton, ATN, OA, Reg Ocean Partnerships, bio, etc.)
- Not including NOPP funding





Theme: None Selected

Data Layers Legends Backgrounds

Filter data layers

- SECOORA CNAPS Wave Height**  
Valid Time: May 18, 2020 08:00 (GMT -04:00)
- SECOORA RENC ADCIRC Currents
- Great Lakes**
- NOAA LEOS Currents

Themes

300 km  
200 mi

40.26835 : -69.09102

Leaflet | Powered by Esri | USGS, NOAA, DigitalGlobe, GeoEye, i-cubed, USDA, USGS, AEX, GeoEye, AeroGRID, IGN, IGN, Mapbox, Swisstopo, and the GIS User Community

Mon May 18 07:00

May 16

May 17

May 18

May 19

May 20

Station 41159 - Onslow Bay Outer, NC (217)

May 18, 2020 07:00 (GMT -04:00)

CORMP

- Sea Surface Swell Wave Period
- Sea Surface Swell Wave Significant Height**
- Sea Surface Swell Wave to Direction
- Sea Surface Wave Mean Period
- Sea Surface Wave Peak Period
- Sea Surface Wave Significant Height
- Sea Surface Wave to Direction
- Sea Surface Wind Wave Period

10.53 s  
0.43 m  
324 °  
6.25 s  
9.09 s  
2.49 m  
312 °  
9.09 s

Explore

Station 41159 - Onslow Bay Outer, NC (217)



Sea Surface Swell Wave Significant Height

# Thank You!

The U.S. IOOS Office