

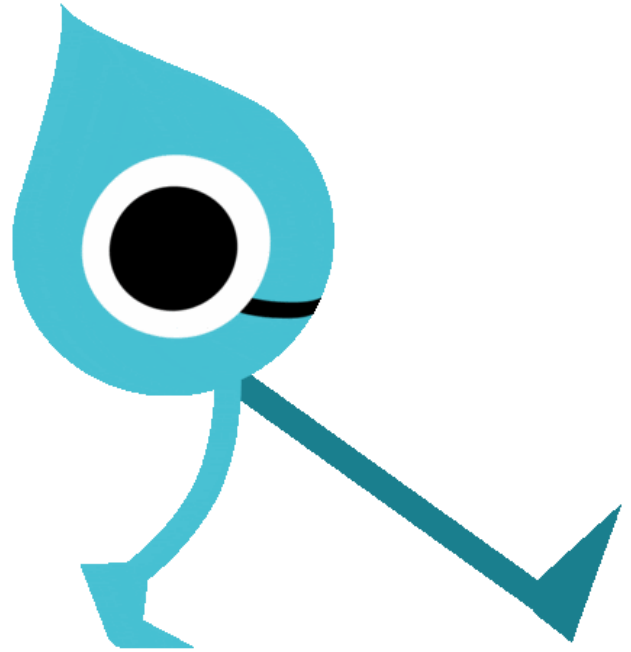


## WATER CYCLE IN A JAR

### Supplies:

Small Plastic Mason Jar, Pebbles, Sand, Soil, Small Plant (with roots), Small Shell, Water

1. Fill a small jar with  $\sim\frac{1}{2}$  inch layer of pebbles.
2. Add  $\sim\frac{1}{2}$  inch layer of sand.
3. Add a layer of soil  $\sim 2$  inches deep.
4. Make a small depression in the soil to set a small plant in & gently cover its roots with soil.
5. Pour a small amount of water onto the soil around the plant.
6. Fill a small shell (or bottle cap) with water and set it gently inside the jar.
7. Screw the lid onto the jar, but not too tightly.
8. Place your water cycle model in a sunny window.
9. Watch for signs of the water cycle, like water droplets (condensation) on the inside of the jar, over the next few days.



Source: US EPA, Thirstin's Water Cycle