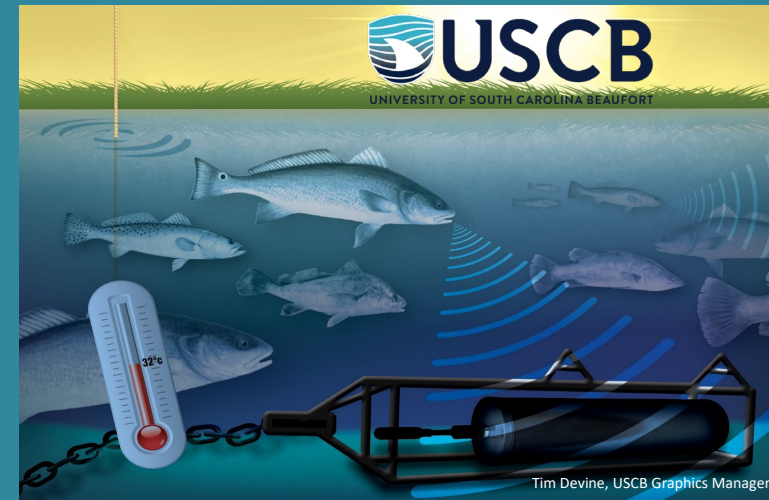


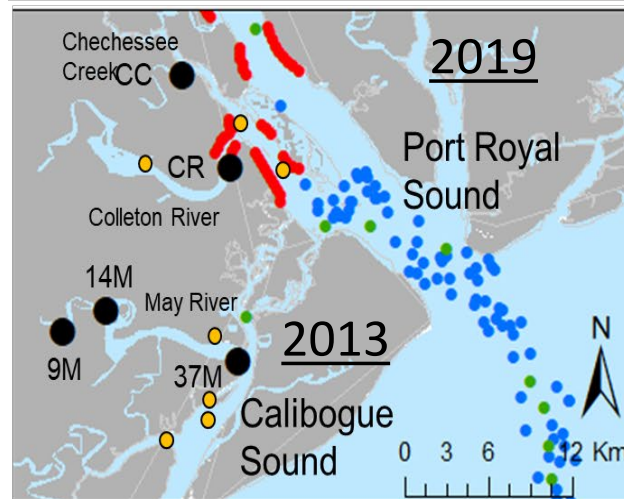
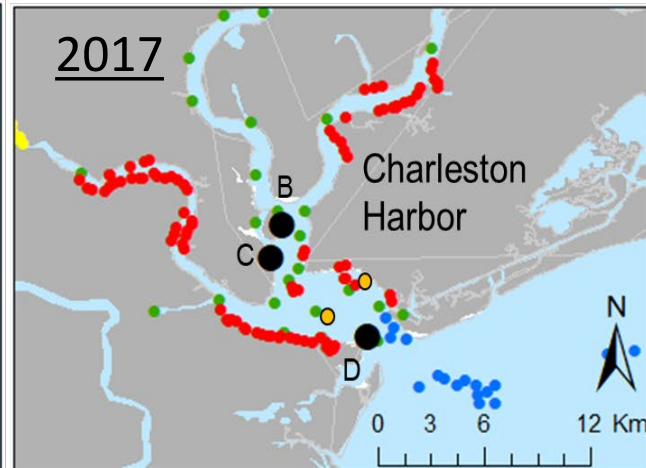
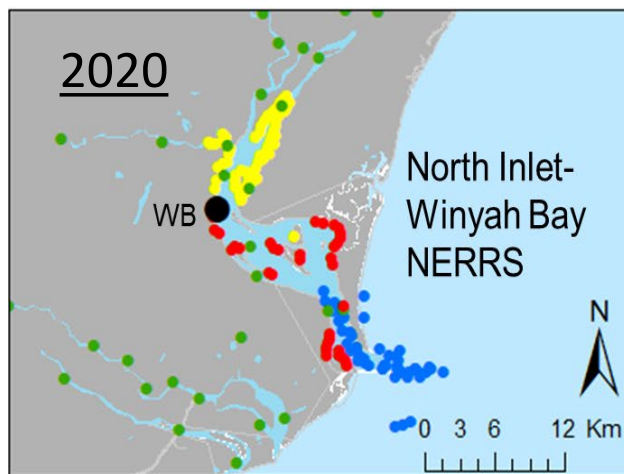
# Estuarine Soundscape Observatory Network in the Southeast (ESONS)



- ESONS  
Passive  
Acoustic  
Recorders  
(n=9)

Eric W. Montie <sup>1, 2</sup> and Alyssa D. Marian <sup>1</sup>  
<sup>1</sup> Dept. Natural Sciences, University of South Carolina Beaufort  
<sup>2</sup> Graduate Program in Marine Biology, College of Charleston

# Overview of the Project



● ESON recorders

● Longline

● Electrofishing

● Trammel net

● Estuarine Trawl Surveys

● Acoustic Telemetry Network

SCDNR  
Surveys

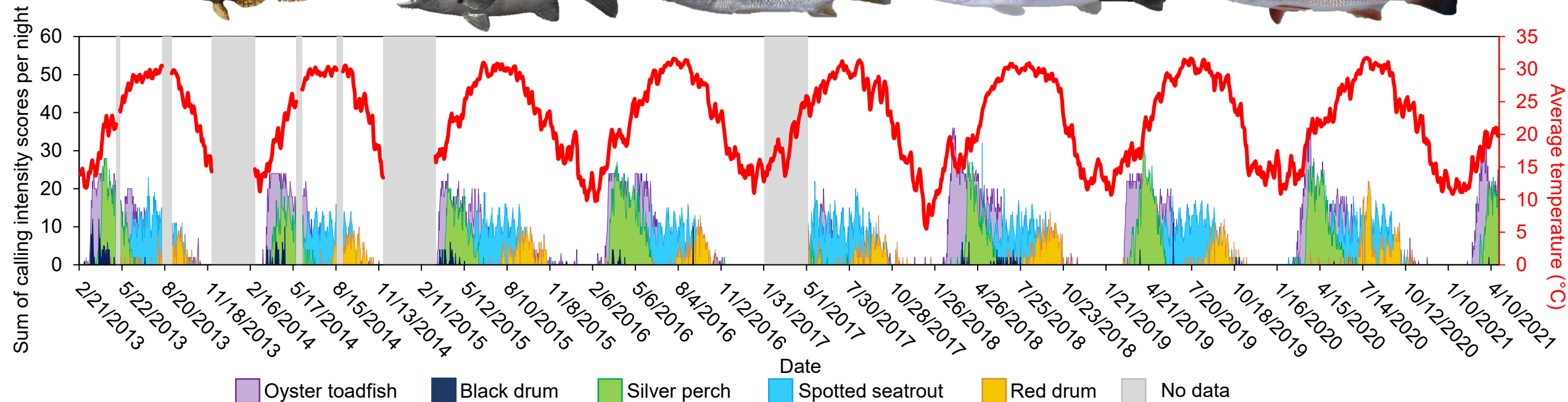


- Sound pressure levels of various bandwidths
- Snapping shrimp acoustic behavior
- Courtship sounds and spawning potential of soniferous fish
- Marine mammal vocalizations
- Anthropogenic noise
- Water temp, depth



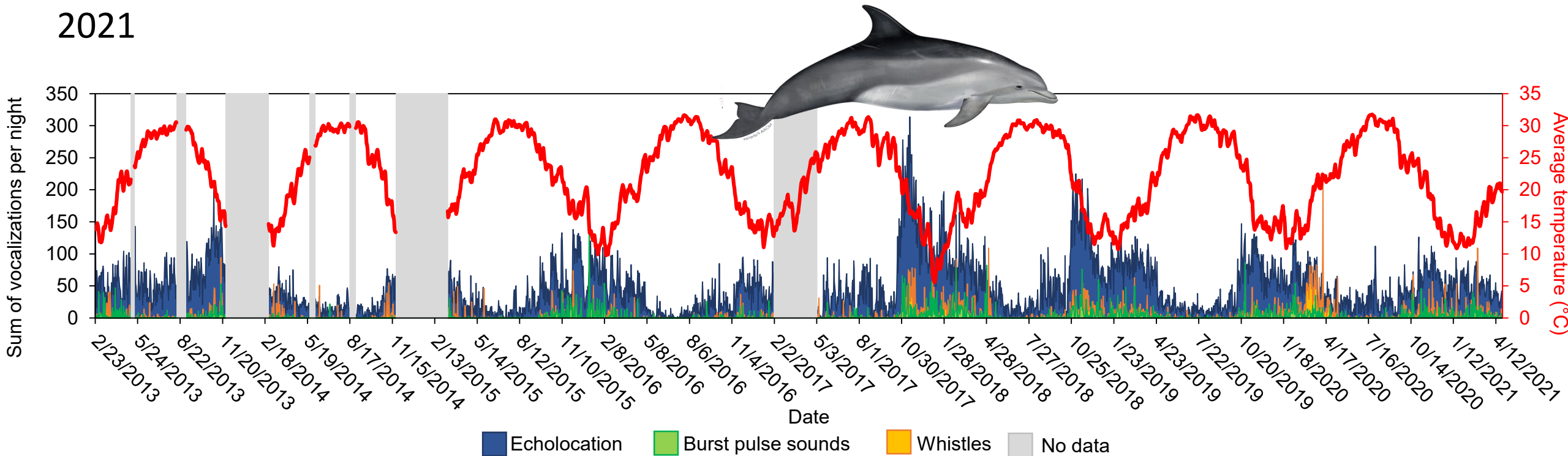
# Accomplishments

- Serviced all nine recorders successfully
- Standardized long-term datasets of soundscape endpoints for May River (n=3), Charleston Harbor (n=3), Chechessee Creek (n=1), Colleton River (n=1), & NI-WB NERRS (n=1) to spring 2021



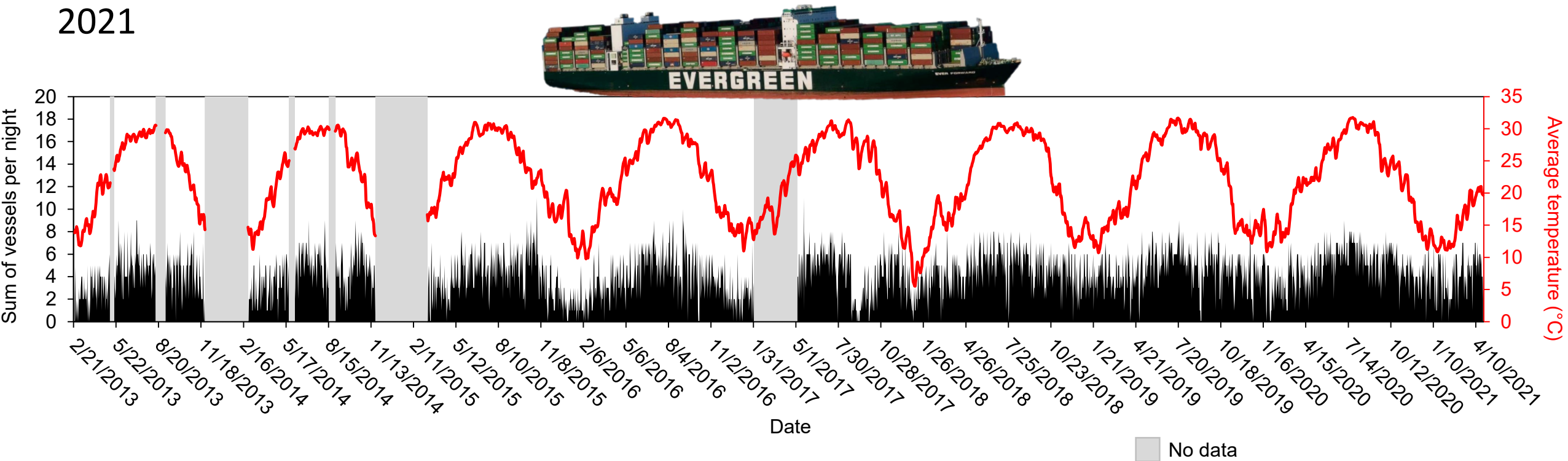
# Accomplishments

- Serviced all nine recorders successfully
- Standardized long-term datasets of soundscape endpoints for May River (n=3), Charleston Harbor (n=3), Chechessee Creek (n=1), Colleton River (n=1), & NI-WB NERRS (n=1) to spring 2021



# Accomplishments

- Serviced all nine recorders successfully
- Standardized long-term datasets of soundscape endpoints for May River (n=3), Charleston Harbor (n=3), Chechessee Creek (n=1), Colleton River (n=1), & NI-WB NERRS (n=1) to spring 2021



# Challenges and Looking Ahead

- Challenges
  - Manual review of acoustic files can be time consuming and labor intensive
  - NI-WB NERRS station contains minimal biological sounds, so we may move this station to Port Royal Sound or ACE Basin NERRS
- Objectives for year 2
  - Continue servicing recorders
  - Finish soundscape endpoints through 2022
  - “The Biological and Anthropogenic Soundscape of an Urbanized Port – The Charleston Harbor Estuary”

