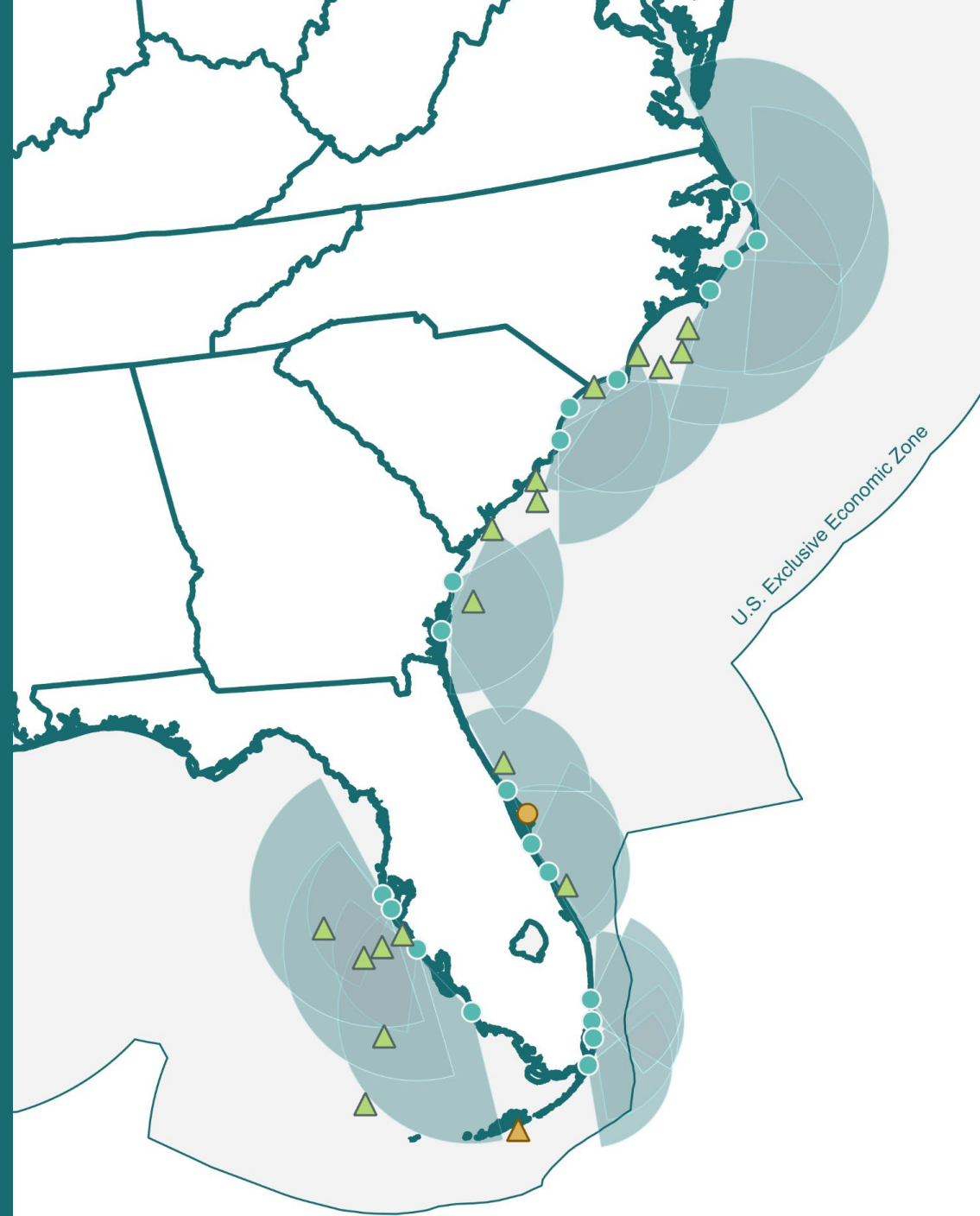


# Southeast Marine Mapping Tool

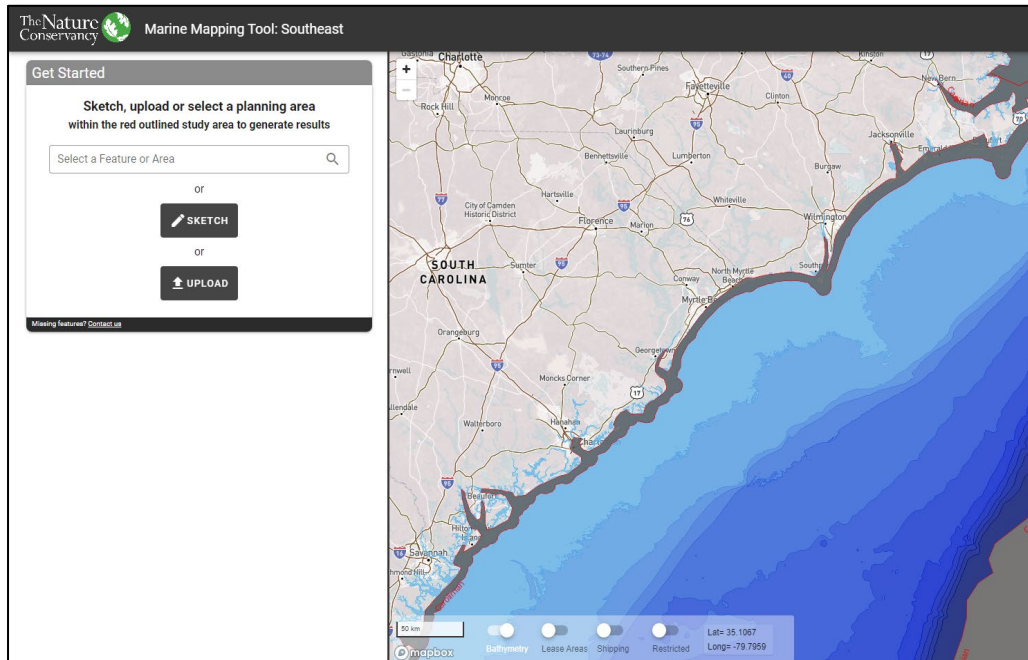
Mary Conley  
The Nature Conservancy



# Overview

## OUR PROJECT:

Leverage marine-life, habitat, and use data available to provide guidance so all users can be part of decision-making process. Tool now available for NE and SE regions.

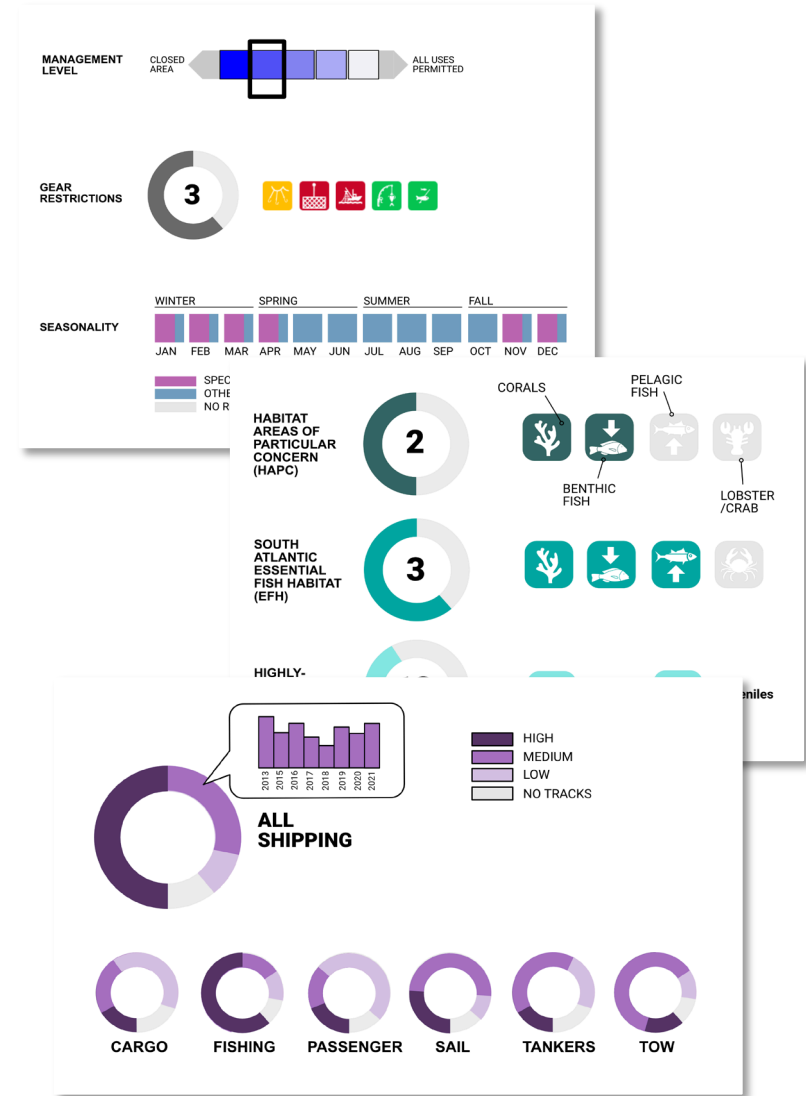
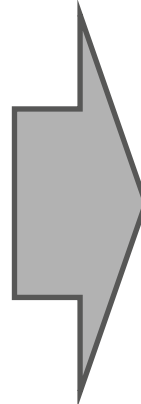
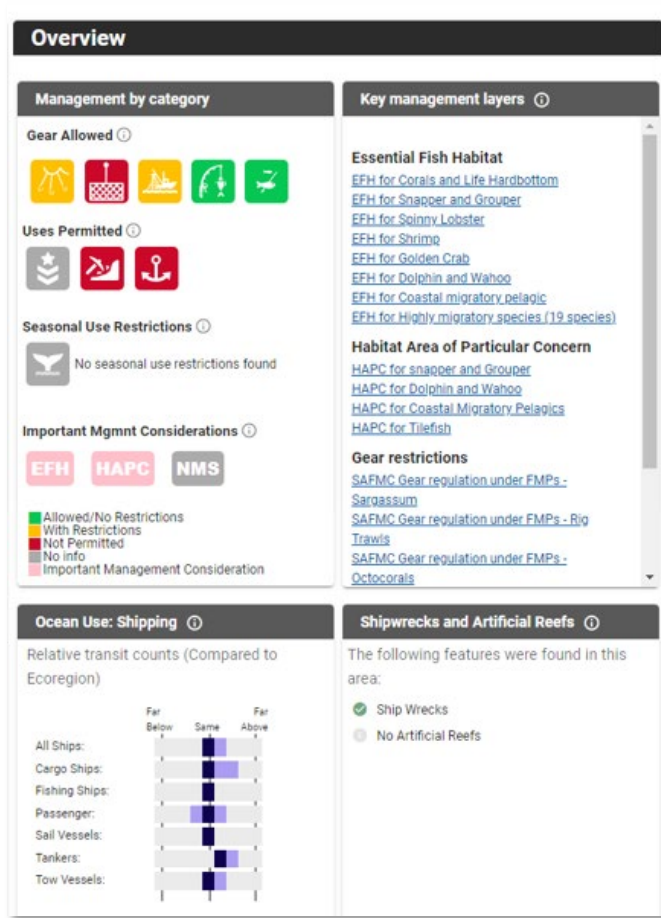


<https://maps.tnc.org/marinemap/>



# Priorities and Accomplishments

- 1 INCREASE TRANSPARENCY AND TRUST ON THE TOOL
- 2 IMPROVE MANAGEMENT & HUMAN-USE INFO
- 3 IMPROVE DATA EXPLORATION ACROSS THE TOOL
- 4 INCREASE FUNCTIONALITY AND STABILITY
- 5 BETTER COMMUNICATION AND ENGAGEMENT



# Priorities and Accomplishments

## Build Transparency and Trust

- Information for each data layer
  - Data source and link
  - Visual representation of data quality
  - Version and when last updated

## Data Exploration

- Working on redesign of summary screen
- Developing new report/factsheet of selected site

## Functionality and Stability

- Data Updates
  - Bird, Marine Mammal, and Turtle models
  - Bathymetry
  - Shipping / Fishing
  - Artificial reefs
  - Cables

## Communication and Engagement

- Project Steering Committee
- Presentations / Collaboration
  - Gulf of Mexico Conference
  - Mid-Atlantic Marine Spatial Planning Workshop
  - SAFMC Habitat Advisory Panel



# Looking Ahead

