

UNCW's Coastal Ocean Research and Monitoring Program (CORMP)

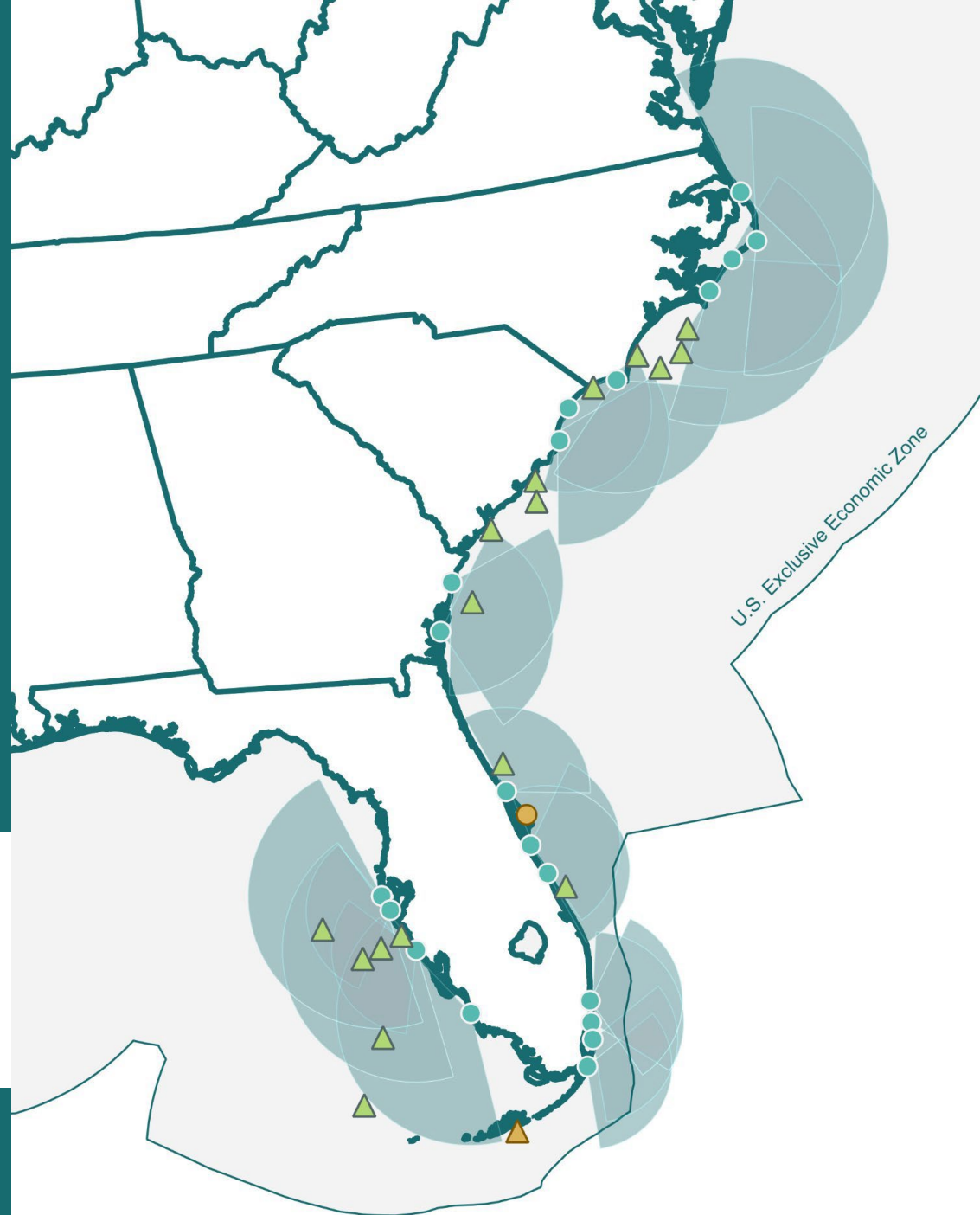
Lynn Leonard & Chris LaClair

University of North Carolina Wilmington

Co-investigators and Partners:

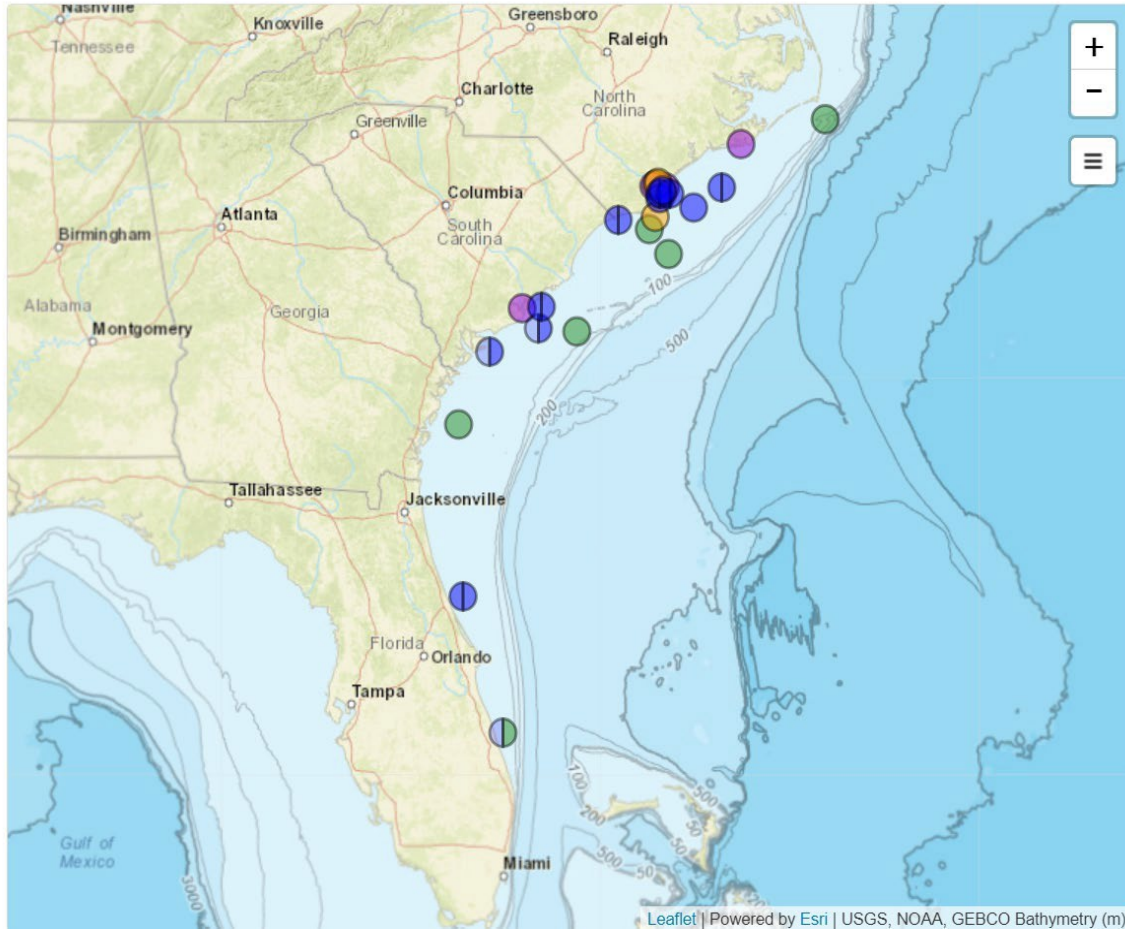


IOOS
Integrated Ocean
Observing System



Overview

UNC-W Coastal Ocean Research and Monitoring Program



CORMP supports 22 real-time observing platforms along the coasts of NC, SC and FL east coast:

- 7 Oceanographic & Meteorological buoys¹
- 8 Wave buoys^{1,2}
- 3 Coastal weather towers
- 1 Coastal water quality station
- 3 Coastal water level stations²

Plus, 1 non real-time instrumented frame (currents/waves + CTD)

Provide quality controlled real-time data with a target collection efficiency of at least 85%.

Support other SECOORA partner initiatives (e.g. FACT, USACE/CDIP, MWP, coastal water level).

Increase value of observations through product development and stakeholder outreach.

Accomplishments


Observing Array Expansion

- New wave buoy at FRP2
- Partner w/ Fripp Island Sea Rescue

FRP2WAVE [Station Information](#)

Wed Apr 24, 2:00 PM EDT

Significant wave height	0.69 m
Peak wave period	3.66 s
Peak wave direction	S (186.23 ° N)
Swell height	n/a
Swell period	n/a
Swell direction	n/a
Wind wave height	0.62 m
Wind wave period	3.12 s
Wind wave direction	S (180.09 ° N)
Mean wave period	3.62 s
Mean wave direction	SSE (167.21 ° N)



Related: [FRP2](#) [Download Data](#)

“The wave buoy has been worth her weight in gold for us and indirectly the public we serve and agencies we work with.”
 – Eric Roberts
 Fripp Island Sea Rescue



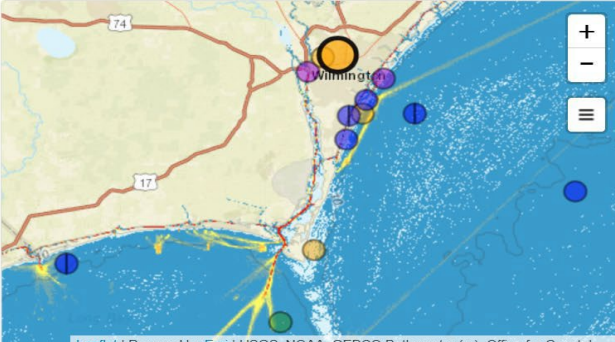
Data Integration

- 2 real-time water level stations (UNCW)
- Coastal camera @ MSNB_N (NCSU)

Web-page enhancements & Alerts

- NCEP wave forecasts, spaghetti models, vessel track layers
- 1900+ SAST alerts

UNCW Coastal Ocean Research and Monitoring Program

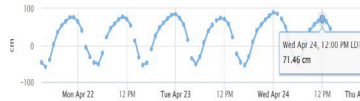



PBWL-01 is located near Kerr Ave and Smith Creek. [Station Information](#)

Wed Apr 24, 2:00 PM EDT

Water level 45.29 cm

Location 34.2625 ° N 77.8877 ° W




[Download Data](#)

MSNB_N [Station Information](#)

Wed Apr 24, 1:30 PM EDT

Camera (daily)	View image
Camera (time averaged)	View image
Wind speed	4 m/s
Wind gust	8.22 m/s
Wind from direction	SSW (202.1 ° N)
Air pressure	1016.95 mbar
Air temperature	22.14 ° C
Rain (day)	0 m
Humidity	69.59 %
Rain (last 6 min)	0 m

Location 34.1712 ° N 77.8234 ° W

[Download Data](#)



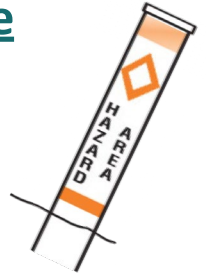
Looking Ahead

Buoy locations kept up to date with USCG. Mariners responsible for updating navigational charts and always keeping a lookout. But accidents happen.....

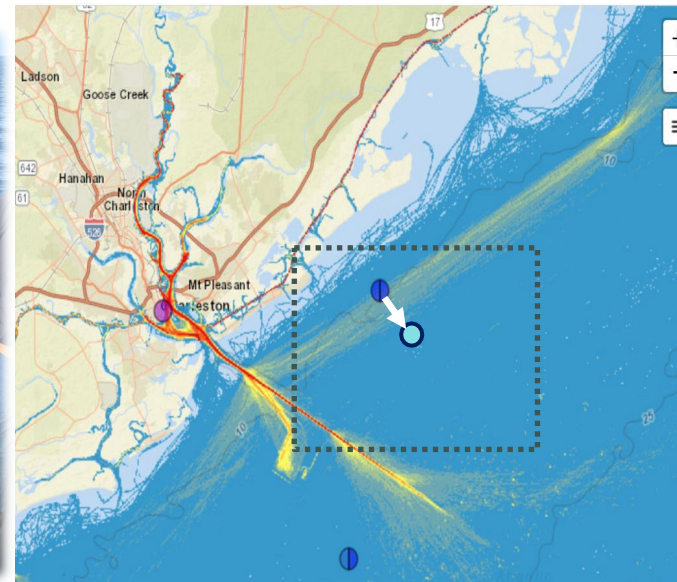


Reduce vessel strikes & platform down-time

- Communication
- Relocation
- Vessel Tracking & AIS
- Visibility, sensor upgrades, redundancy



UNC-W Coastal Ocean Research and Monitoring Program



Please begin by drawing an AOI to be downloaded.
[Download large orders here.](#)

Area (sq.mi)	Date Range	Size (GB)	XY	Actions
141	1/1/2021-4/1/2021	0.01		Show
Size Limit: 2GB		Total	0.01 GB	

email address You will be emailed a link with download instructions when your order is ready
 confirm email

I understand NOAA's [Privacy Policy](#)
 Send me the Marine Cadastre [Quarterly Newsletter](#)

[SUBMIT ORDER](#)

MarineCadastre.gov
AccessAIS
 A BOEM, NOAA & USCG PARTNERSHIP